



TEMPESTA™ LED REMOTE (TA-RMT-LED)

INSTRUCTIONS IMPORTANT SAFEGUARDS

When using electrical equipment, basic safety precautions should always be followed including the following:

1. **READ AND FOLLOW ALL SAFETY INSTRUCTIONS**
2. Turn off power supply before attempting to install the unit
3. Do not let power cords touch hot surfaces
4. Do not mount near gas or electric heaters.
5. Equipment should be mounted in locations and at heights where unauthorized personnel will not readily subject it to tampering.
6. The use of accessory equipment not recommended by BeLuce Canada Inc., may cause an unsafe condition, and will void the unit's warranty.
7. Do not use this equipment for other than its intended purpose.
8. Qualified service personnel should perform servicing of this equipment.
9. Consult building code for approved wiring and installation
10. The fixture must be grounded to avoid potential electric shock
11. This device complies with part 15 of the FCC Rules. Operation is subject to the following two conditions: (1) This device may not cause harmful interference, and (2) this device must accept any interference received, including interference that may cause undesired operation.
12. **SAVE THESE INSTRUCTIONS!**

INSTALLATION

NOTE: DC Polarity is critical yellow lead is positive and purple lead is negative. Reverse polarity connection will damage LED boards and void warranty.

1. Remove the lens by placing an appropriate sized flat head screw driver into the snap lock clips and pushing the clips slightly in and down until they release the lens. This must be completed to each of the four clips (Figure 1).
2. Pull the lens away from the unit. The internal reflector and chassis can now be removed by placing the screw driver into the reflector locking channels and twisting slightly until the clip releases. This must be completed to each of the four mounting channels (Figure 2). For recessed installation see (Figure 3)
3. Pull the reflector and chassis away from the back plate.
4. Bring the DC wires into the housing through the top or back knockout hole using a matched conduit fitting (supplied by others).
5. Surface, wall or ceiling installation can be completed by installing screws and washers (supplied by others) with a waterproof cap through the back of the fixture housing (Figure 4).
6. Connect 12V or 24 VDC to yellow (positive +) and to purple (negative -).
7. Re-align the reflector with the back plate and push together until each locking clip engages (Figure 5).
8. Align the lens with the unit and push in back into place until each lens snap lock clip engages.

WALL MOUNTING

Fixture is shipped with LED strips positioned for ceiling mounting. To improve light distribution for wall mounting (Figure 10) configure unit as follows:

1. Test switch holes indicates bottom of fixture (Figure 6)
2. Ensure locating pin goes through slot in LED strip (Figure 7)
3. Un-snap bottom LED strip and gently snap into middle notch and lower notch (Figure 8)
4. Un-snap top LED strip and gently snap into lower notch and upper notch (Figure 10)

MAINTENANCE

1. The equipment is to be repaired whenever the equipment fails to operate as intended during the duration test. Written records of test results and any repairs made must be maintained. BeLuce Canada Inc. strongly recommends compliance with all Code requirements.
2. Clean lens on a regular basis.

NOTE: The servicing of any parts should be performed by qualified service personnel only. The use of replacement parts not furnished by BeLuce Canada Inc., may cause equipment failure and will void the warranty.

The LEDs listed herein when used according to the instructions with this unit are in accordance with the requirements of CSA Standard C22.2, No. 141 – Unit Equipment for Emergency Lighting.

Figure 1

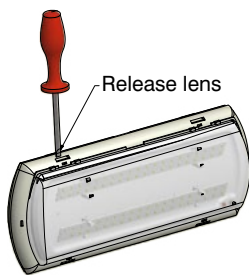


Figure 2

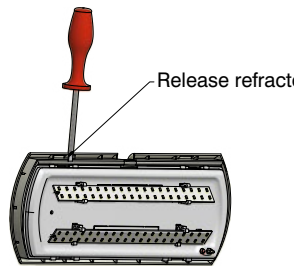


Figure 3

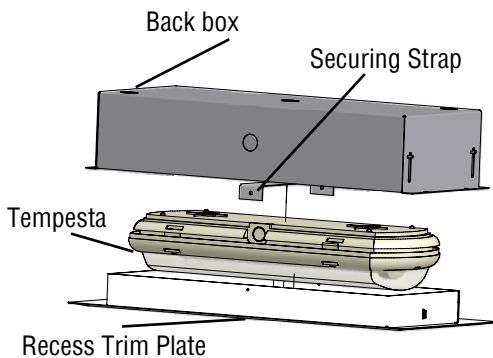


Figure 4

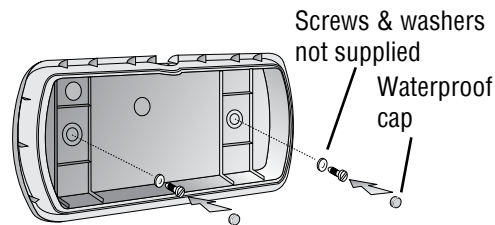


Figure 5

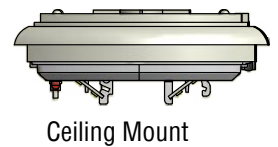
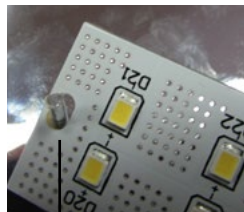


Figure 6



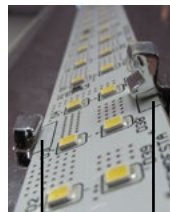
Test Switch
Holes

Figure 7



Locating Pin

Figure 8



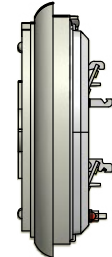
Lower Notch Middle Notch
Bottom Board

Figure 9



Lower Notch Upper Notch
Top Board

Figure 10



Wall Mount

TROUBLESHOOTING

LED STRIPS DO NOT COME ON AT ALL IN EMERGENCY MODE

1. Either the output of battery unit equipment is shorted or the DC lead wires are not connected.
2. Check and ensure:
 - DC polarity is correct at both yellow (+) and purple (-) wires
 - If polarity is connected wrong, LED boards need to be replaced.

SAVE THESE INSTRUCTIONS