

## INSTRUCTIONS

### IMPORTANT SAFEGUARDS

When using electrical equipment, basic safety precautions should always be followed including the following:

1. **READ AND FOLLOW ALL SAFETY INSTRUCTIONS**
2. Turn off power supply before attempting to install the unit
3. Do not let power cords touch hot surfaces
4. Do not mount near gas or electric heaters.
5. Equipment should be mounted in locations not readily accessible to unauthorized persons.
6. The use of accessory equipment not recommended by BeLuce Canada Inc., may cause an unsafe condition, and will void the unit's warranty.
7. Do not use this equipment for other than its intended purpose.
8. Qualified service personnel should perform servicing of this equipment.
9. Consult building code for approved wiring and installation
10. The fixture must be grounded to avoid potential electric shock
11. **SAVE THESE INSTRUCTIONS!**

This device complies with part 15 of the FCC Rules. Operation is subject to the following two conditions: (1) This device may not cause harmful interference, and (2) this device must accept any interference received, including interference that may cause undesired operation.

## INSTALLATION

### SURFACE MOUNT – WALL OR CEILING

1. Using a flat-head screwdriver, push snap lock clips slightly in and down to release the clip. Repeat for all 4 clips to remove lens (figure 1).
2. Place screwdriver into reflector locking channels and twist slightly until clip releases. Repeat for all 4 channels to separate reflector assembly from backplate (figure 2).
3. Mount backplate to mounting surface using appropriate fasteners and washers (supplied by others). Cover fasteners with provided waterproof caps (figure 3).
4. Connect conduit to wire pass-through hole using appropriate connector, and pass required wires through. Conduit is required to maintain IP65 rating, if installed in a wet location.  
If using wall-switch control wires (ACEM version only), wall-switch wires and AC supply wires must not be in the same conduit!
5. Re-position LED strips for wall or ceiling mount, if required. See section below (figures 6 and 7).
6. Make electrical connections (figure 8).  
Plug-in battery connector(s) (EM and ACEM versions only).  
Connect AC supply wires.  
Connect wall-switch control wires, if applicable (ACEM version only).  
**CAUTION:**  
Do not connect any supply voltage to the wall-switch control wires!  
Do not route wall-switch control wires in the same conduit as AC supply wires!
7. Re-attach reflector assembly onto backplate, and lens onto unit.
8. Turn ON AC supply.

Figure 1

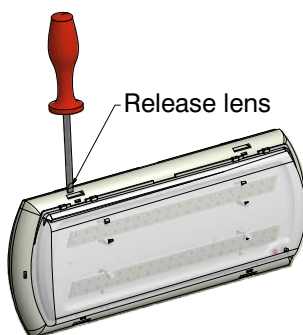


Figure 2

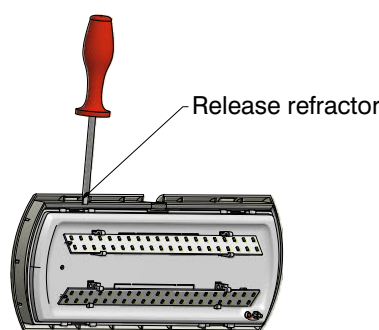
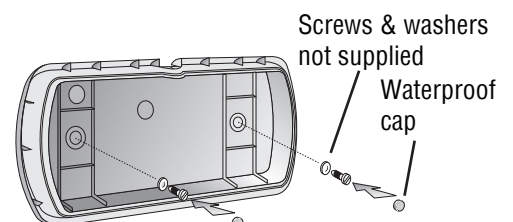


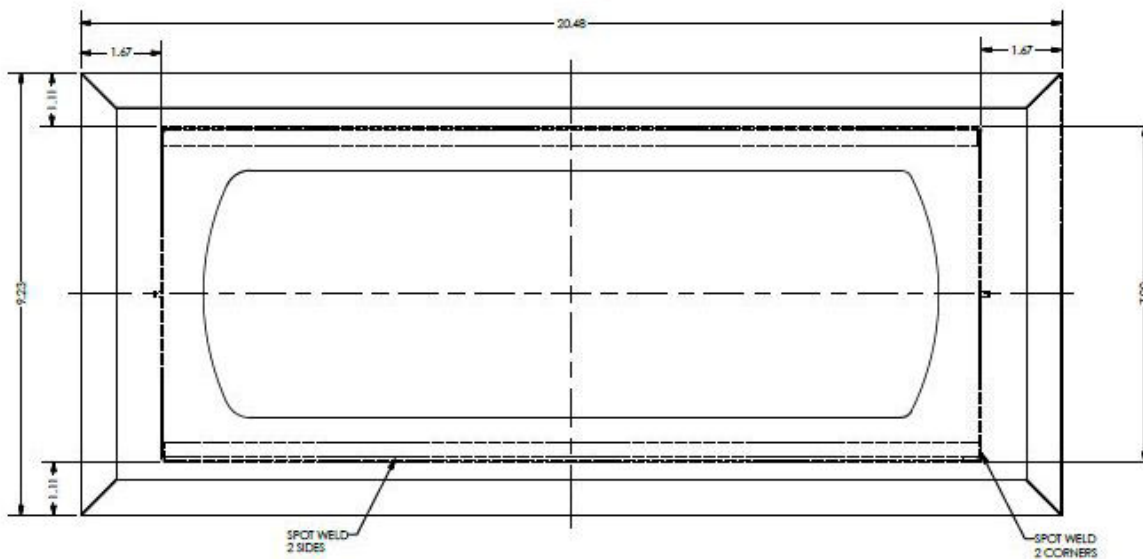
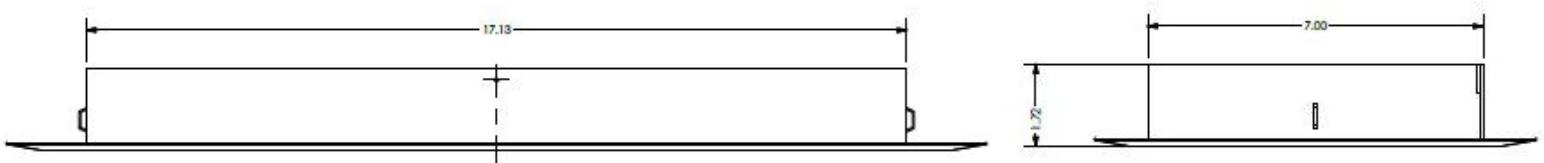
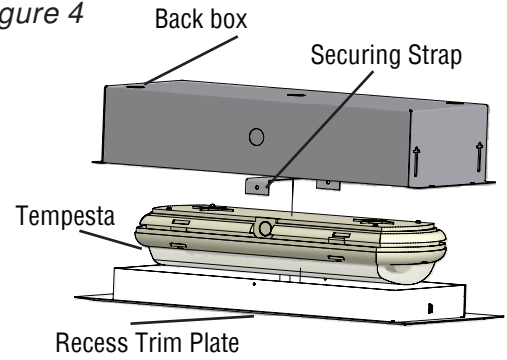
Figure 3



## RECESSED MOUNTING:

1. Pull trim plate away from backbox to expose 2 torsion springs.
2. Squeeze torsion springs to unhook from backbox.
3. Install recess backbox as per building requirements.
4. If LED strip re-positioning is required, follow step 1 of Surface Mount instructions, and LED strip re-positioning instructions.
5. Unit is supplied with electrical wires brought out of housing. Make electrical connections (figure 8).
6. Place unit, face down, into recess trim plate, and re-attach to backbox with torsion springs.

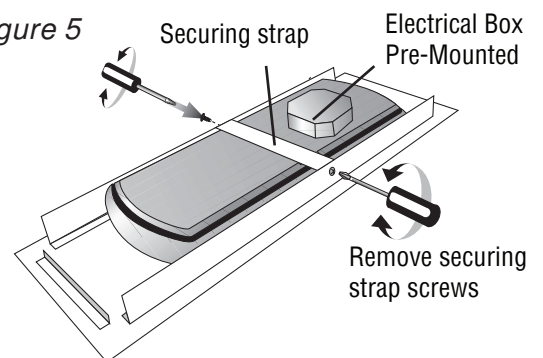
Figure 4



## T-BAR MOUNTING:

1. If LED strip re-positioning is required, remove securing strap (figure 5), follow step 1 of Surface Mount instructions, and LED strip re-positioning instructions.
2. Mount unit onto T-bar. **Do not rely on T-bar as the only support for the unit!** Four (4) chain-mounting holes are provided on each corner of T-bar trim plate to secure the unit.
3. Unit is supplied with electrical wires in a pre-mounted electrical box (figure 5). Make electrical connections (figure 8).

Figure 5



## LED STRIP REPOSITIONING:

1. Un-snap top & bottom LED strips.
2. Snap LED strips back into proper notch based on figures 6 and 7 below.

Figure 6

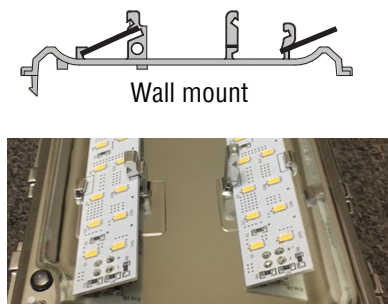
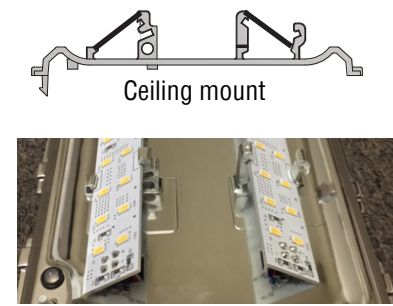
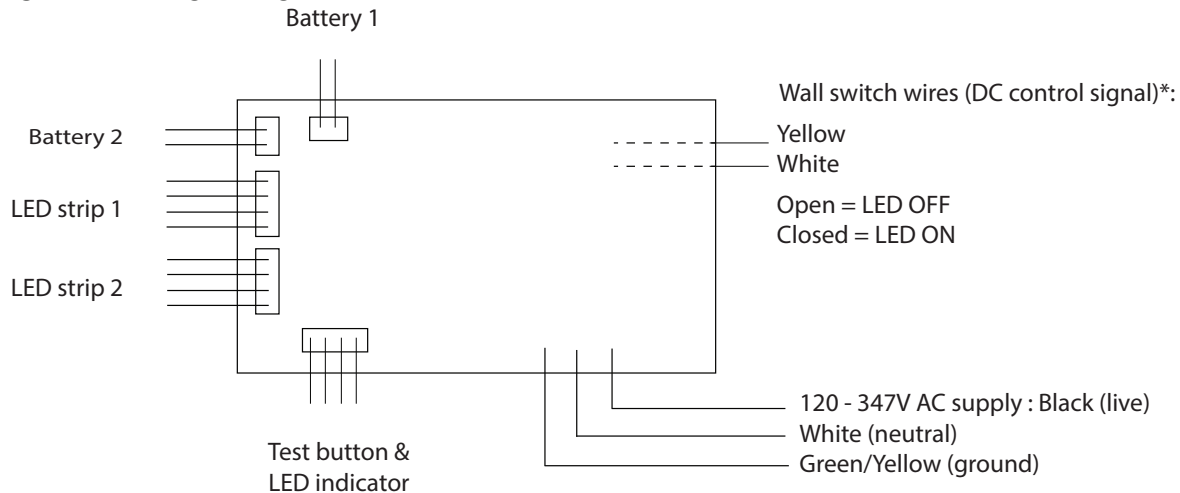


Figure 7



## ELECTRICAL WIRING DIAGRAM

Figure 8



\*Only available for ACEM version, as an option.

\*To control multiple units by a single switch, connect all wall-switch control wires in parallel; same colour to same side of switch!

### CAUTION:

**Do not connect any supply voltage to the wall-switch control wires!**

**Do not route wall-switch control wires in the same conduit as AC supply wires!**

**Do not leave battery connected to unit without AC supply for a long duration!**

## NORMAL OPERATION

AC version: Functions as a regular lighting fixture; ON/OFF control is by AC line voltage switching.

EM version: Lights are OFF when AC supply is present; Lights turn ON when AC supply is cut-off.

ACEM version: Lights are ON or OFF when AC supply is present, control is by DC signal wall-switch; Lights turn ON when AC supply is disconnected, irrespective of wall-switch position.

- Steady Green: Normal Operation
- Flashing Red/Green: High Charging
- Steady Red: Battery Disconnected

For EM and ACEM versions with Auto-test option: **Additional Auto-test instructions are supplied.**

## UNIT RESET

1. Disconnect AC supply and battery from unit.
2. Wait 10 seconds.
3. Reconnect battery first, and then AC supply.