

INSTRUCTIONS

IMPORTANT SAFEGUARDS

When using electrical equipment, basic safety precautions should always be followed including the following:

1. Do not let power cords touch hot surfaces.
2. Do not install near gas or electric heaters.
3. The use of accessory equipment not recommended by manufacturer, may cause an unsafe condition, and will void the unit's warranty.
4. Do not use this equipment for other than its intended purpose.
5. Servicing of this equipment should be performed by qualified service personnel.
6. **SAVE THESE INSTRUCTIONS!**

INSTALLATION

(See Figure 1. Same for SRE2 Double Heads):

1. Make wire connections. Observe polarity; connect the lamp to the DC supply wires; positive and negative are identified with labels on each wire.
2. Install the canopy to the Junction Box with the Mounting Screws.
3. Apply power.

HEADS ADJUSTMENT

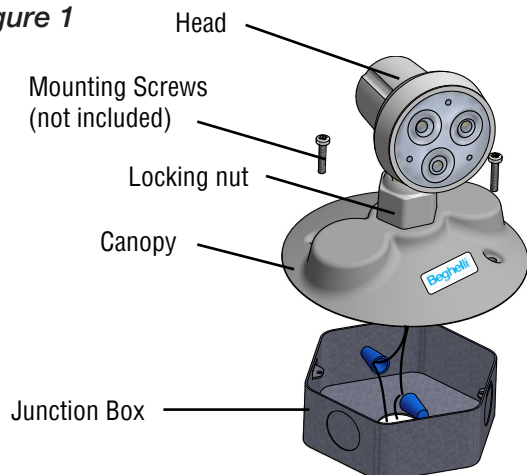
Rotation - To rotate the heads, unscrew the locking nut (Fig 1.) by hand, enough to let you rotate the heads to the desired position. Tighten the locking nut gently to fix the position of the heads.

WARNING! The locking nut should be tightened by hand only. Avoid tightening with the use of a tool.

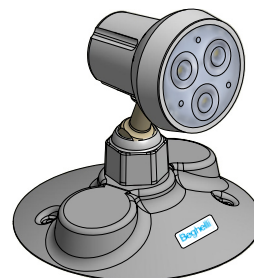
LAMP(S) REPLACEMENT

To replace a lamp(s), refer to the labels at the bottom of the canopy and contact customer support to order or for further information.

Figure 1



Note: For lamp(s) replacement, refer to the identification label at the bottom of the canopy



NOTE : LUMINAIRE'S STYLE AND LAMP TYPE WILL VARY WITH LUMINAIRE OPTIONS.