



INSTRUCTIONS

IMPORTANT SAFEGUARDS

When using electrical equipment, basic safety precautions should always be followed including the following:

1. **READ AND FOLLOW ALL SAFETY INSTRUCTIONS**
2. Disconnect power before performing work on electrical equipment.
3. Do not let power cords touch hot surfaces and do not mount near gas or electric heaters.
4. Equipment should be mounted in locations and at heights where unauthorized personnel will not readily subject it to tampering.
5. The use of accessory equipment not recommended by BeLuce Canada Inc. as it may cause an unsafe condition, and will void the unit's warranty.
6. Do not use this equipment for other than its intended purpose.
7. Servicing of this equipment should be performed by qualified service personnel.
8. Consult building code for approved wiring and installation.
9. **SAVE THESE INSTRUCTIONS!**

WALL MOUNT INSTALLATION:

1. Remove torx screws (1) to release cover. There are 4 O-rings (2) inserted to the clear cover screw holes.
2. Remove the back plate (14) knockout applicable knockout holes in back plate (14). Install the gasket (26) and bushing (22). Feed the lead wires through back plate then secure the back plate and housing to the wall. Connect wire per wiring diagram provided. Connect battery. **Caution! Failure to insulate unused wire may result in a shock hazard or unsafe condition as well as equipment failure.** Reinstall inside mount plate (27).
3. Replace clear cover, torx screws, and O-rings.
4. Apply power.

CEILING/END MOUNT INSTALLATION

1. Remove torx screws (1) to release cover. There are 4 O-rings (2) inserted to the cover screw holes.
2. Remove the inside mounting plate (27).
3. To install canopy kit (18), 3 knockout on the top (for ceiling mount) or the 3 knockout on the side (for end mount). Position canopy gasket (15) and the canopy (18). Install the cap screws (21) and the washers. Attach canopy nuts and then tighten. Install the liquid tight (22) bushing. Install the canopy mounting base (20) to the octagon box (23) (not supplied). Connect wires per diagram provided. **Caution! Failure to insulate unused wire may result in a shock hazard or unsafe condition as well as equipment failure.** The mounting base can be rotated for the desired mounting angle. Install the canopy (18) to the mounting base (20) with the supplied screws (17). Feed the lead wires through the bushing and tighten to complete the liquid tight seal.
4. Connect battery.
5. Replace cover, torx screws, and O-rings.
6. Apply power.

MAINTENANCE

The equipment is to be tested once a year in accordance with the code requirements. The equipment is to be repaired whenever the equipment fails to operate as intended during the duration test. Written records of test results and any repairs made must be maintained. BeLuce Canada Inc. strongly recommends compliance with these code requirements.

The lamps listed herein when used according to the instructions with this unit are in accordance with the requirements of CSA Standard C22.2, No. 141 – Unit Equipment for Emergency Lighting.

NOTE: The servicing of any parts should be performed by qualified service personnel only. The use of replacement parts not furnished by the manufacturer may cause equipment failure and will void the warranty.

WIRING DIAGRAM

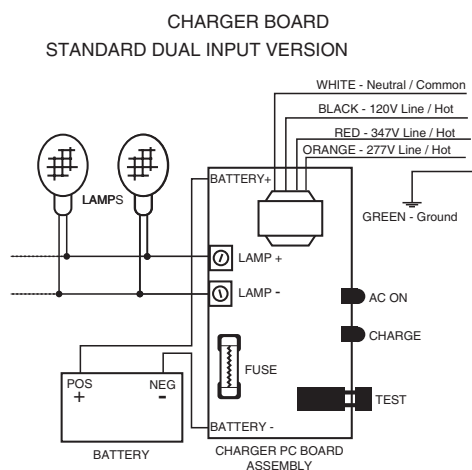
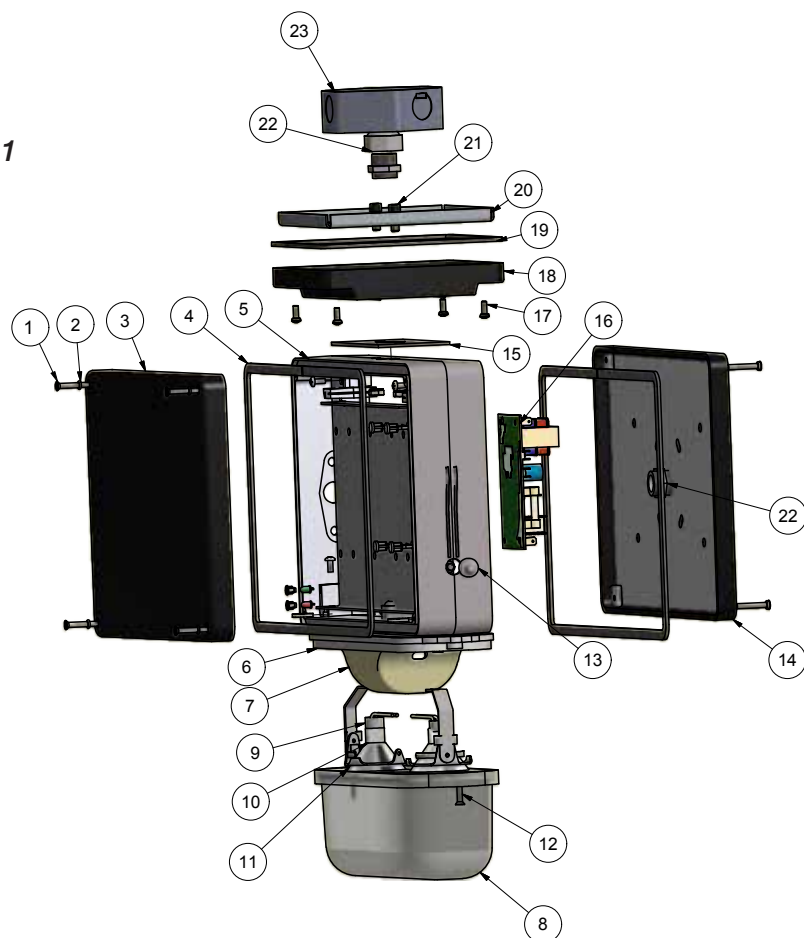


Figure 1



Parts List

1. Torx tamper proof screw 8-32 x 1
2. "O" ring 1/16 wide x 5/32 ID x 9/32 OD
3. FTZ combo lens black
4. Frame gasket
5. FTZ frame
6. FTZ combo base
7. FTZ combo cover
8. FTZ combo lens
9. MR16 socket
10. MR16 lamp
11. MR16 lamp holder
12. Tamper proof screws
13. Switch and cover
14. Back plate
15. Gasket for canopy to frame sealing
16. Circuit board
17. 8-32 x 1/2 inch oval head screw, Phillips
18. Canopy for exit
19. Gasket canopy
20. Mounting base for canopy
21. Capscrews
22. Bushing
23. Octagon box (not supplied)
24. Battery
25. Ground wire
26. Back plate gasket
27. Inside mounting plate

Figure 2

