

FLEXLINE E30

DISCONTINUOUS FLEXIBLE LINEAR

■ FL13-120V-JB82SI112.5W-14-2835-NW-4.5

IK10 IP67 

EACH MODEL NUMBER CONSISTS OF THE FOLLOWING:
SERIES / LENGTH / OPERATION / COLOUR TEMPERATURE / INPUT

SERIES	FLEXLINE E30 (4.5W)
LENGTH	25M
OPERATION	AC ONLY
COLOUR TEMP	5000K
INPUT VOLTAGE	120V



IMPORTANT SAFEGUARDS

When using electrical equipment, basic safety precautions should always be followed including the following:

READ AND FOLLOW ALL SAFETY INSTRUCTIONS.

1. Read these instructions carefully before installation and save them for future reference.
2. Fixtures must be wired in accordance with the national electrical code and all applicable local codes. Proper grounding is required for safety.
3. This product must be installed in accordance with the applicable installation code by a qualified electrician who is familiar with the construction and operation of the product and the hazards involved.

SAVE THESE INSTRUCTIONS!

RISK OF FIRE, ELECTRIC SHOCK OR PERSONAL INJURY

Before installation, turn power off.

WARNING

No user serviceable parts. Refer service to a qualified service technician. Read instructions prior to installing and/or operating this device. Installation should be performed by a licensed electrician/installer in accordance with local codes.

WARNING: This product is designed for operation on 120V AC power. Ensure the supply voltage matches the product rating before use.

WARNING: Always fully uncoil the product before operation. **DO NOT** operate the product while coiled, as this may cause overheating.

WARNING: **DO NOT** operate if the product or power cord is damaged.

WARNING: **DO NOT** modify, cut, puncture, shorten, splice, deform, or apply mechanical stress to the product. **DO NOT** step on the product.

WARNING: Avoid sharp bends or pinching of the product. Minimum bend radius: Ø 50 mm.

WARNING: Ensure adequate air circulation around the product during operation.



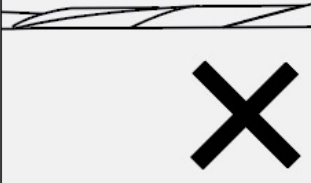
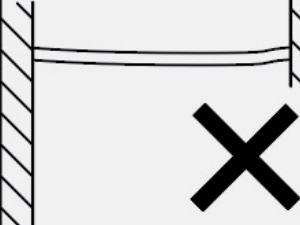
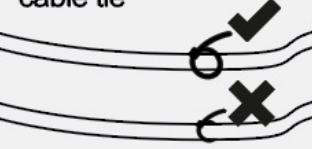

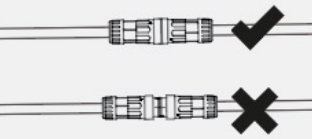
WARNING: **DO NOT** connect product lengths exceeding the maximum length specified on the product spec page.

WARNING: To prevent electrical shock, **DO NOT** handle the product with wet hands. Always disconnect power before connecting, mounting, or servicing the product.

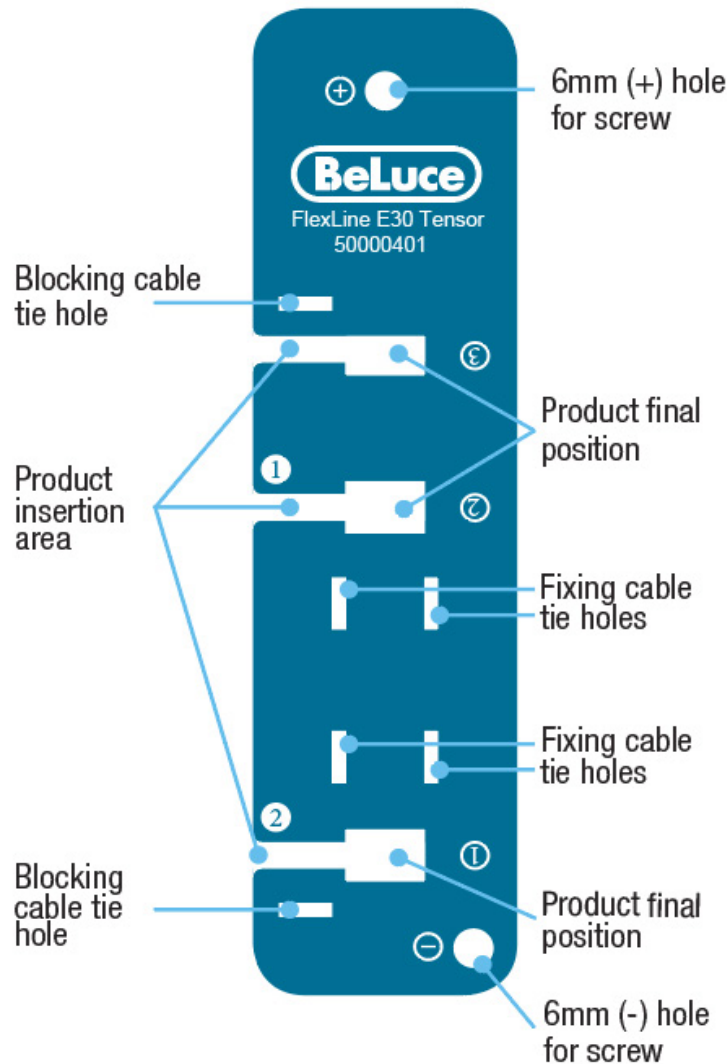
WARNING: Ensure all connections and the end cap on the final segment are securely fastened to prevent water ingress.

WARNING: **DO NOT** look directly into the illuminated product, as the light output may cause eye injury.

WARNING: Installation and servicing must only be performed by qualified personnel in accordance with applicable national electrical codes and regulations.

<p>CAUTION </p> <p>THE FOLLOWING OUTLINES PRACTICES THAT SHOULD BE AVOIDED.</p> <p>DO NOT modify, deform, or cut the product or any of its components.</p>  <p>DO NOT STEP ON PRODUCT</p>	<p>Twisted</p> 	<p>Sagging/Hanging</p> 	<p>Always leave space between the product and the cable tie</p> 
	<p>SHORT CIRCUIT RISK 120V AC ! NEVER CONNECT BEFORE PRODUCT IS MOUNTED.</p>	<p>Do not pull the product through doors that may be closed</p> 	<p>Make sure the quick connector is properly tightened.</p> 

FLEXLINE E30 TENSOR BRACKET



1- The Specific Steps of Installation (Tensor & Top of Elevator Shaft)

STEP 1

Put the product through the insertion areas until the final position as indicated in the drawings on the right (first "1" and then "2").



IMPORTANT! Use only the sections of the product that do not contain LEDs when securing the fixture to the tensor.

STEP 2

Insert and tighten the exterior blocking cable tie. This cable tie will ensure the correct position of the product.

Insert the fixing cable ties wrapping the product with the tensor.

DO NOT tighten the cable ties.

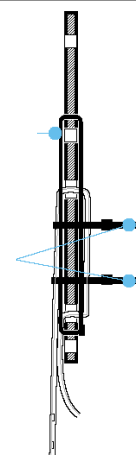
Make sure that the length of the remaining fixture is enough to illuminate the additional areas if needed.

Recommended cable tie size 250x5mm (LxW).



Tightened exterior blocking cable tie

Loose fixing cable ties



STEP 3

Screw the tensor into the desired position of the wall using the diameter 6mm hole (+).

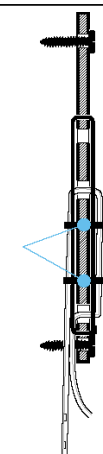
Make sure that the product is in the right position and tightly close the fixing cable ties.

Screw the tensor on the wall using the diameter 6mm hole (-).

In case of any other additional areas need to be tightened, use wall plugs and cable ties to fix the product. **NOTE:** Distance between wall plugs for horizontal sections 0.5m and 1.5m for vertical sections.



Tighten fixing cable ties

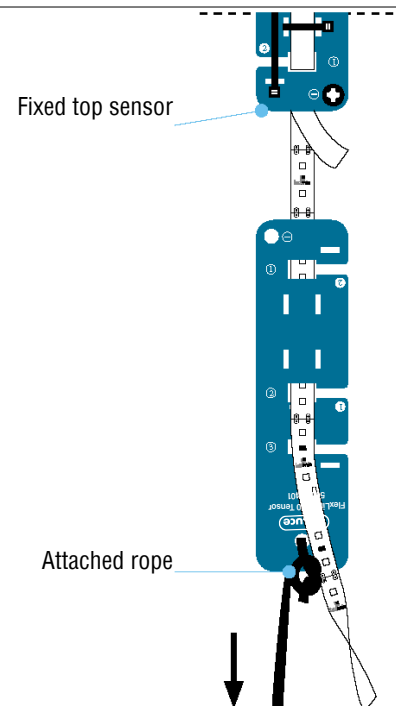


2- The Specific Steps of Installation (Tensor & Bottom of Elevator Shaft)

STEP 1

Below the already fixed top tensor, put the product through the bottom tensor as shown in the image. Attach a rope to the diameter 6mm hole (+). This rope must be at least the same length as the height of the elevator shaft.

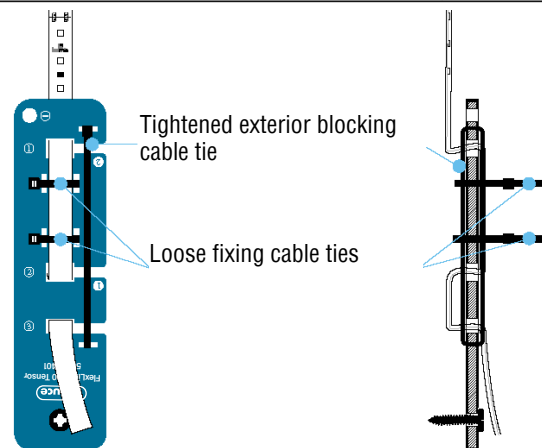
From the bottom of the shaft, pull the rope down together with the bottom tensor to place the product in the correct position. Once the bottom tensor is in the desired position, remove the rope and proceed to fix it as follows.



STEP 2

Feed the product through the insertion points until it reaches the final position as shown in the drawings on the right (first "1" then "2" and finally "3"). Insert and securely tighten the blocking cable tie to secure the product in the correct position.

Insert the fixing cable ties wrapping the product with the tensor. **DO NOT** tighten the cable ties. Screw the tensor in the desired position of the wall using the diameter 6mm hole (-).

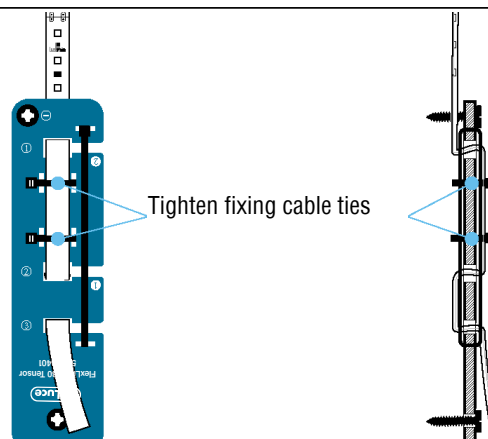


IMPORTANT! Use only the sections of the product that do not contain LEDs when securing the fixture to the tensor.

STEP 3

Make sure that the product is in the right position and tightly close the fixing cable ties. Screw the tensor on the wall using the diameter 6mm hole (-). Make sure that the cable ties are properly tightened and the length of the remaining fixture is enough to illuminate the additional areas.

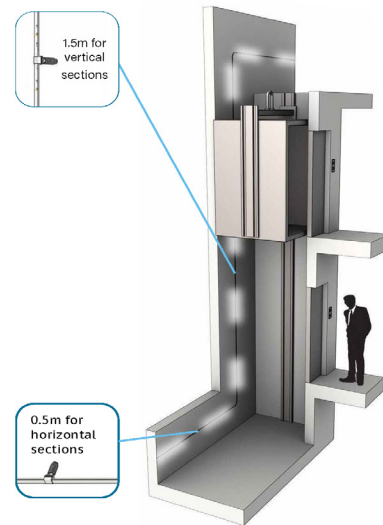
If any other additional areas need to be illuminated, use wall plugs and cable ties to fix the product
NOTE: distance between wall plugs for horizontal sections 0.5m and 1.5m for vertical sections.



3- The Specific Steps of Installation (Wall Plugs - not included)

If using wall plugs to fix the product to the wall, make sure the distance between the plugs are 1.5m for vertical sections and 0.5m for horizontal sections.

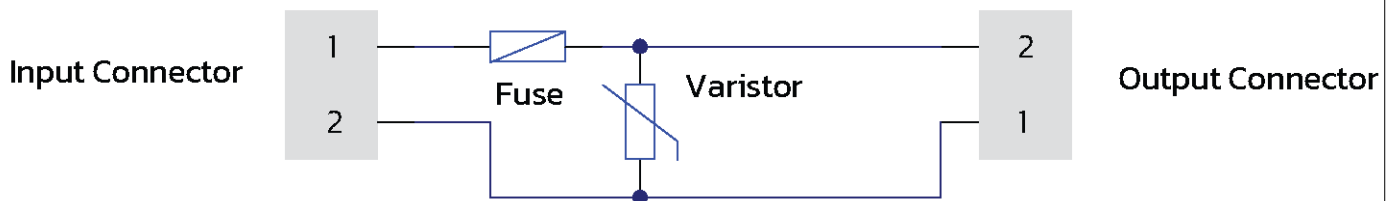
Cable ties must be placed in the areas of the product without LEDs.



4- The Specific Steps of Installation (Power Cable - Junction Box Wiring)

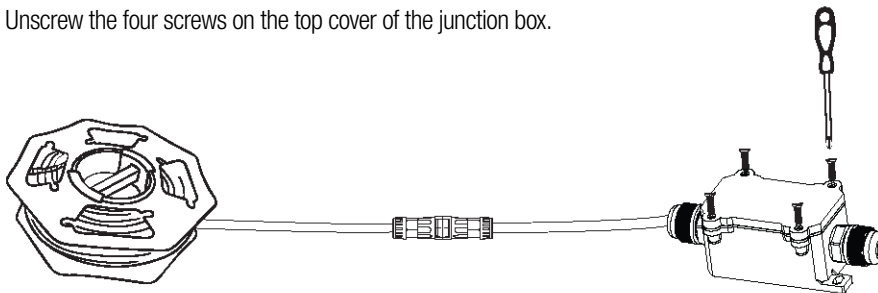
(Note: Fuse included in the Junction Box for short-circuit protection)

Fuse and Varistor Diagram / Ratings
(Fuse-8A Time Lag Fuse, Varistor-120V)

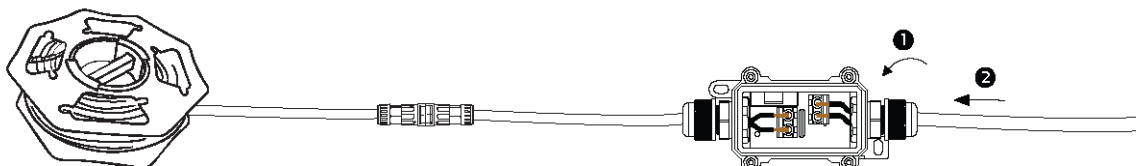


5- The Specific Steps of Installation (Power Cable)

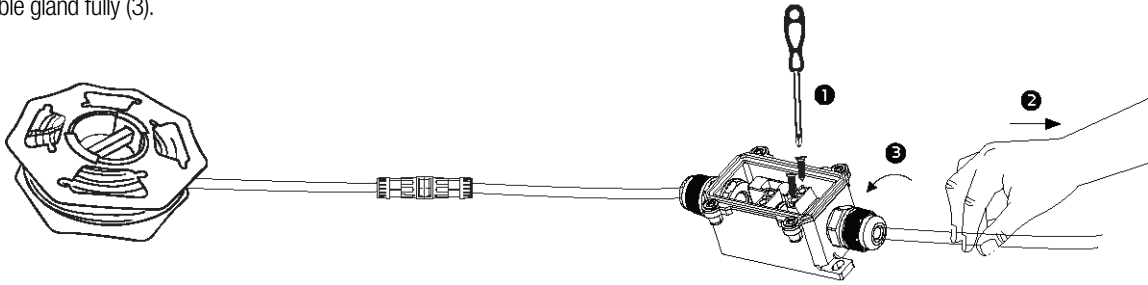
1. Unscrew the four screws on the top cover of the junction box.



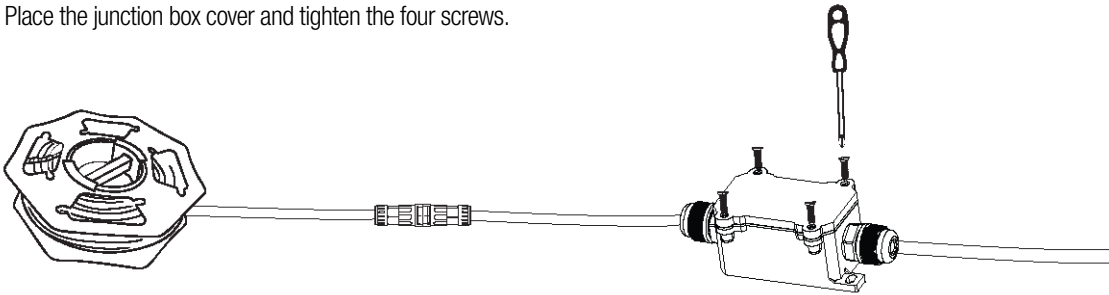
2. Remove the cover. Loosen the cable gland on the other end of the junction box (1), then insert the power cable (2). Ensure the wire leads are fully secured in the terminal screw terminals.



3. Tighten the terminal screws (1) and gently tug the power cable to confirm secure connection (2). Once verified, tighten the cable gland fully (3).



4. Place the junction box cover and tighten the four screws.



5. Place the junction box onto the intended mounting surface. Then tighten the two screws to secure it firmly to the surface, and the installation is hereby completed.

