
INSTRUCTIONS

IMPORTANT SAFEGUARDS

When using electrical equipment, basic safety precautions should always be followed including the following:

1. **READ AND FOLLOW ALL SAFETY INSTRUCTIONS.**
2. Disconnect power before performing work on electrical equipment.
3. Do not use outdoors.
4. Do not let power cords touch hot surfaces and do not mount near gas or electric heaters.
5. Use caution when servicing batteries.
6. Equipment should be mounted in locations and at heights where unauthorized personnel will not readily subject it to tampering.
7. The use of accessory equipment not recommended by BeLuce Canada Inc., may cause an unsafe condition, and will void the unit's warranty.
8. Do not use this equipment for other than its intended purpose.
9. Servicing of this equipment should be performed by qualified service personnel.
10. Allow battery to charge for 24 hours before first use.
11. **SAVE THESE INSTRUCTIONS!**

INSTALLATION

Fixture is suitable for wall mounting, end mounting, ceiling mounting. For all mounting, attach crossbar to junction box.

CEILING AND WALL SURFACE MOUNTING (figures 1 & 2):

1. Attach spider plate/crossbar to junction box.
2. Feed AC supply wires through canopy center hole.
3. Assemble canopy onto aluminum housing with screws (supplied).
4. Make proper wire connections.
5. Use screws (supplied) to tighten canopy to mounting plate (spider plate/cross bar).
6. The unit can be installed on any surface, you may rotate the Acrylic panel in any angle from 0° to 180°.

END MOUNTING (figure 3):

1. Attach spider plate/crossbar to junction box.
2. Remove the opposite mounting end cap and knock out the hole on the cap for pulling through wires.
3. Slide open the housing so the AC wires are easier to redirect.
4. Pull out the AC supply wires and feed wires through the holes of end cap (first) and then canopy.
5. Assemble canopy and end cap to metal bracket with screws (supplied).
6. Make proper wire connections.
7. Use screws (supplied) to tighten canopy to mounting plate (spider plate/cross bar).

Change Running Man Pictogram:

1. Remove buttons and unscrew the faceplate from the trim assembly.
2. Exchange the pictogram.
3. Reinstall buttons and press together.

Battery Connection (figure 4):

1. Use a flat tool to open the housing cover. There is a groove at the end of the housing.
2. Connect the battery to the connector on the charger board (PCB).
3. Reinstall the cover. There is an arrow to indicate the top edge of the cover

Allow 24-hours recharge time after installation or power failure for full-load testing.

This equipment is furnished with a sophisticated low voltage battery dropout circuit to protect the battery from over-discharge after it's useful output has been used.

MAINTENANCE

1. BeLuce Canada Inc. recommends that the equipment be tested and that written records be maintained according to the local building code.
2. The equipment is to be repaired whenever the equipment fails to operate as intended during the duration test.
3. Clean faceplates/lenses on a regular basis

TROUBLESHOOTING

IF THE EMERGENCY LIGHTING FIXTURE IS EXPERIENCING ONE OF THE FOLLOWING PROBLEMS:

- The LED indicator is off or displaying the wrong status.
- The LED strip is on during AC power, but there is no emergency backup function.
- The LED strip is on, but the battery is not charging (battery voltage is low).

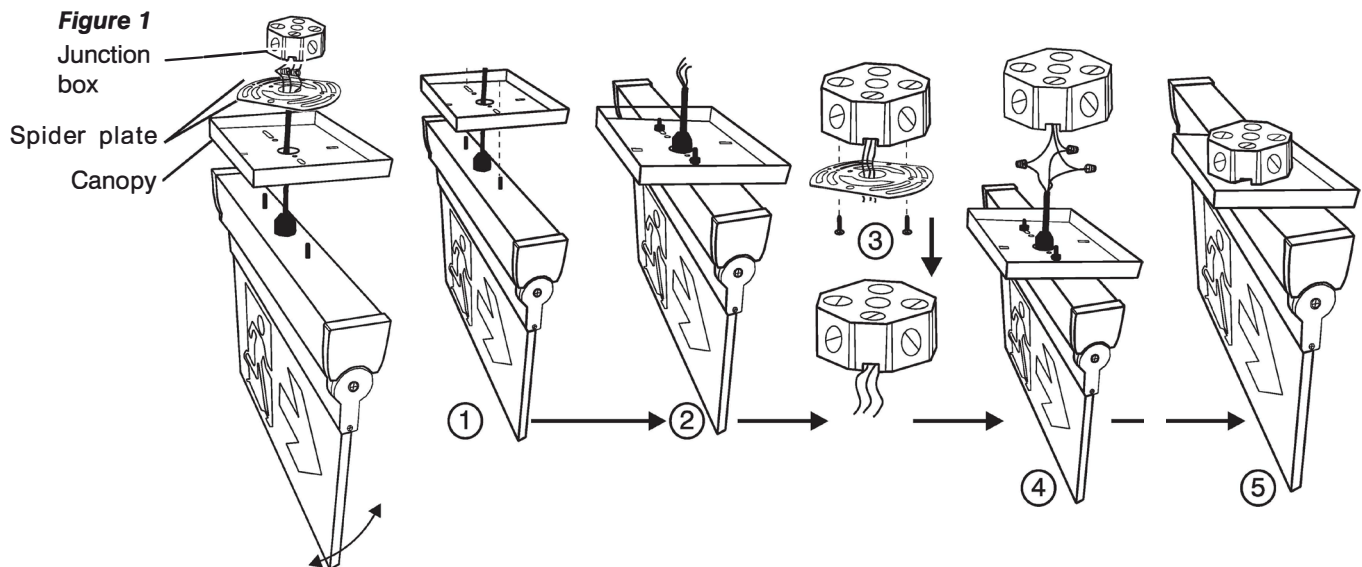
PERFORM A HARD RESET ON THE BATTERY AND CHARGER BOARD Steps to Perform a Hard Reset:

1. **Disconnect AC Power:** Turn off the AC power supply to the emergency lighting fixture.
2. **Unplug the Battery:** Safely disconnect the battery pack from the charger board.
3. **Wait for 10 Seconds:** Allow the system to completely discharge by waiting a minimum of 10 seconds.
4. **Reconnect Power:** Plug the battery pack back into the charger board.
5. **Restore the AC power** to the fixture.
6. **Verify the Reset:**
 - I. Check that the LED indicator is functioning correctly.
 - II. Ensure that the battery is charging and the emergency backup function is operational.

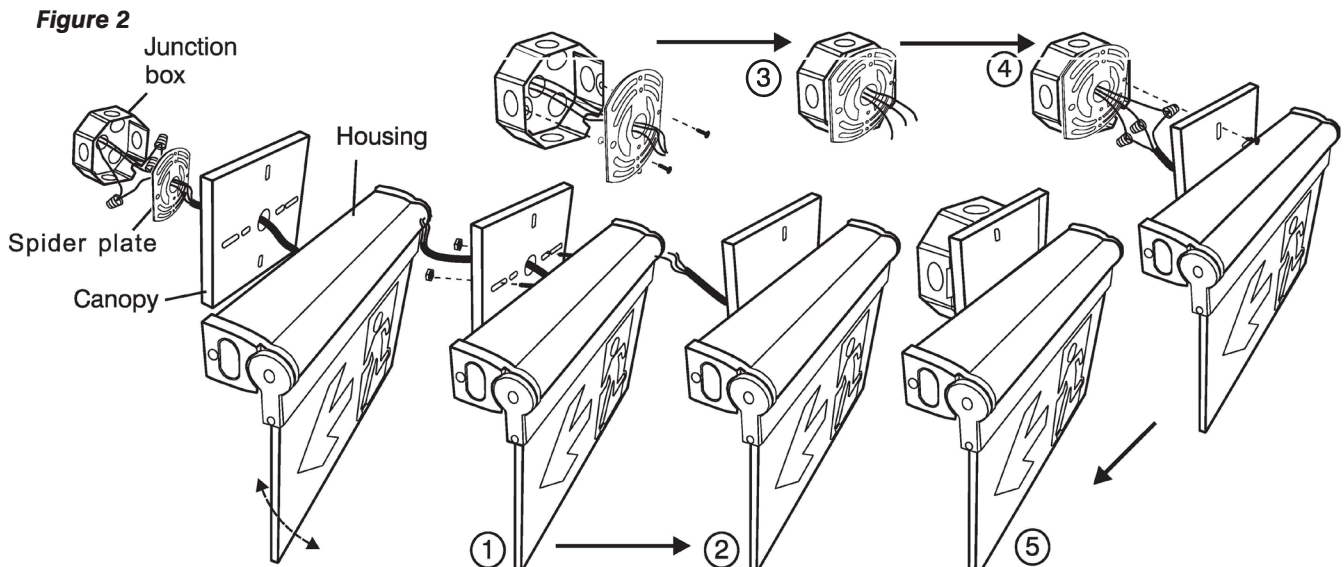
NOTE: If the issue persists after performing the hard reset, further inspection of the fixture or professional assistance may be required.

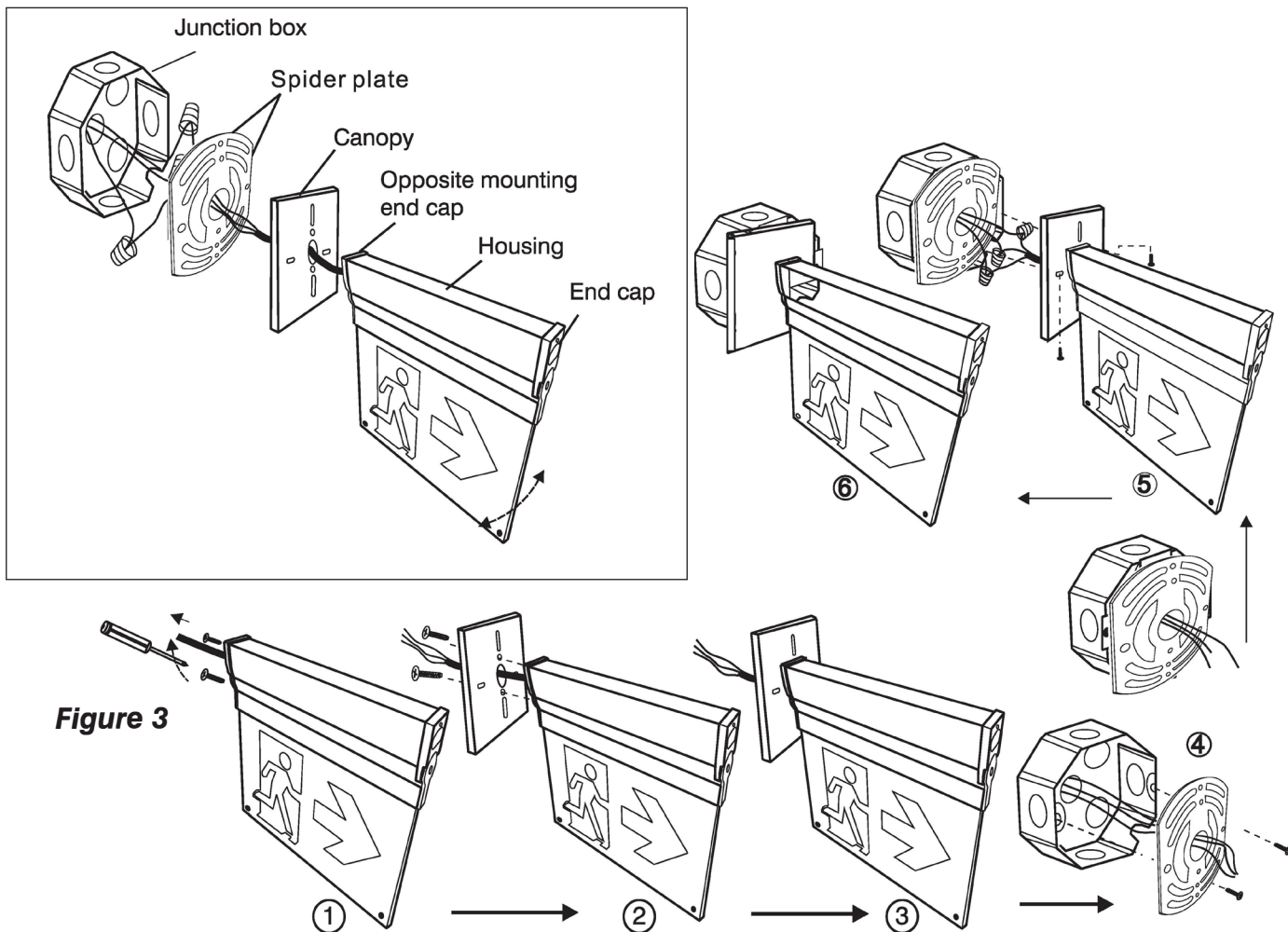
SAVE THESE INSTRUCTIONS

Surface ceiling mount

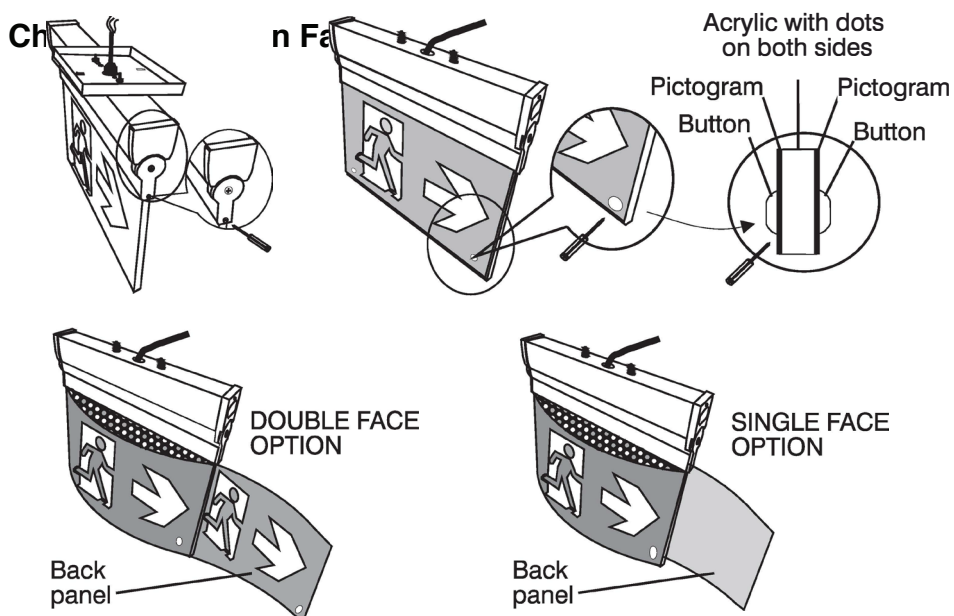


Surface wall mount





Changing the Sign Face



! DO NOT TAKE APART THE FRAME

Figure 4

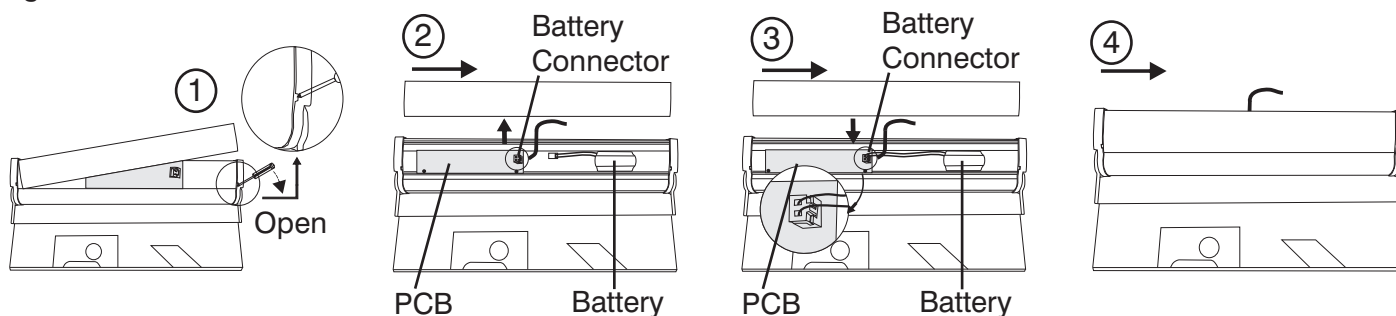


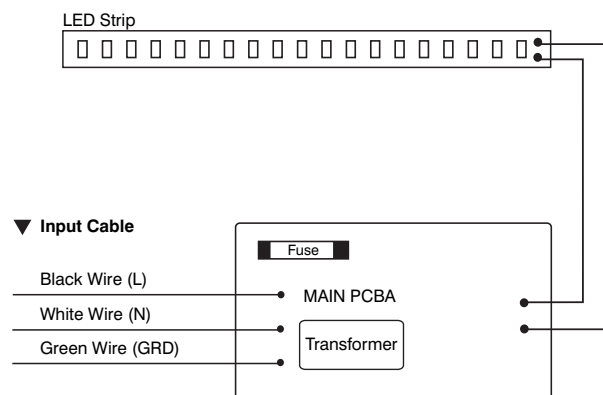
Figure 5

Wiring Diagram

AC Supply Voltage: 120-347VAC 50/60Hz

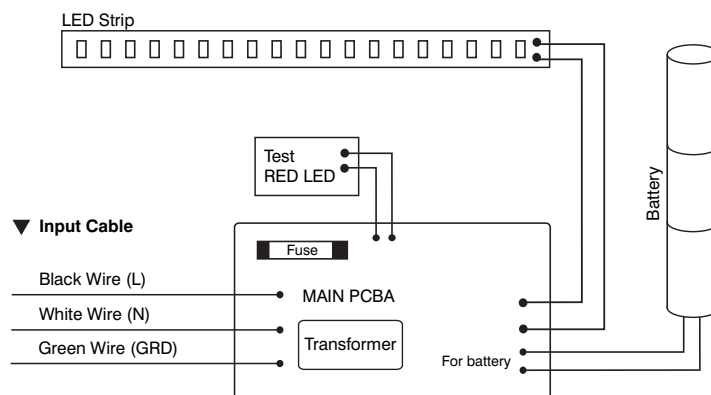
AC Only

Model #: CRV-RM-L-U-0LR-M



Self-Powered

Model #: CRV-RM-SP-L-U-0LR-M

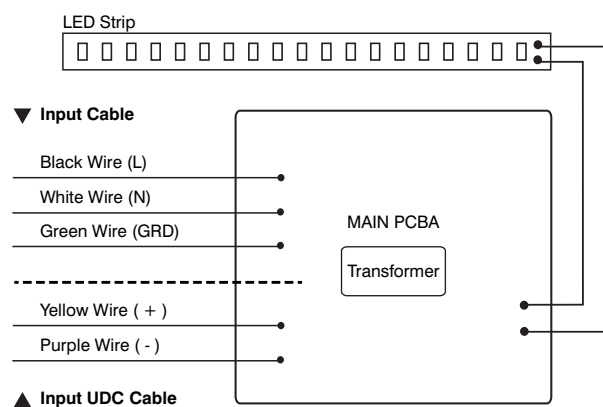


UDC

Model #: CRV-RM-L-U-0LR-M-UDC

Yellow wire: 6V to 24V/DC positive(+)

Purple wire: Negative(-).



INSTRUCTIONS IMPORTANT SAFEGUARDS

When using electrical equipment, basic safety precautions should always be followed including the following:

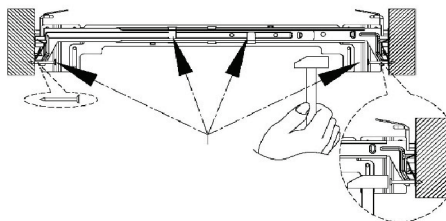
1. **READ AND FOLLOW ALL SAFETY INSTRUCTIONS.**
2. Disconnect power before performing work on electrical equipment.
3. Use caution when servicing batteries.
4. Equipment should be mounted in locations and at heights where unauthorized personnel will not readily subject it to tampering.
5. The use of accessory equipment not recommended by BeLuce Canada Inc., may cause an unsafe condition, and will void the unit's warranty.
6. Do not use this equipment for other than its intended purpose.
7. Servicing of this equipment should be performed by qualified service personnel.
8. **SAVE THESE INSTRUCTIONS!**

INSTALLATION

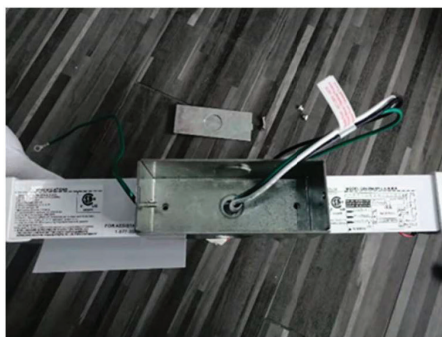
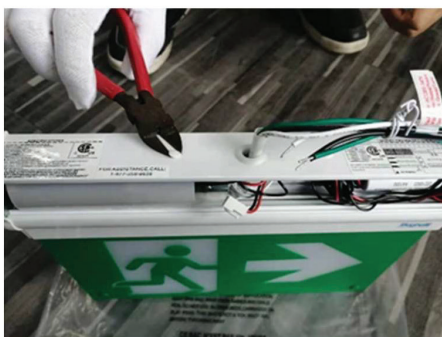
1. Open package, separate hanging bars from the recessed mounting frame and unscrew the trim plate from the recessed mounting frame.



2. Install hanging bars to the recessed mounting frame, position the recessed mounting frame and the hanging bars between joists, secured by screws supplied. Make sure the whole assembly is in the center between joists, then secured hanging bars on both sides through holes on the bars.



3. Adjust the height of the recessed mounting frame vertically to an ideal position using the adjusting slots and tightening all screws.
4. Remove two plugs from unit housing. Remove J-box cover and mount J-box case onto the housing using the provided screws.



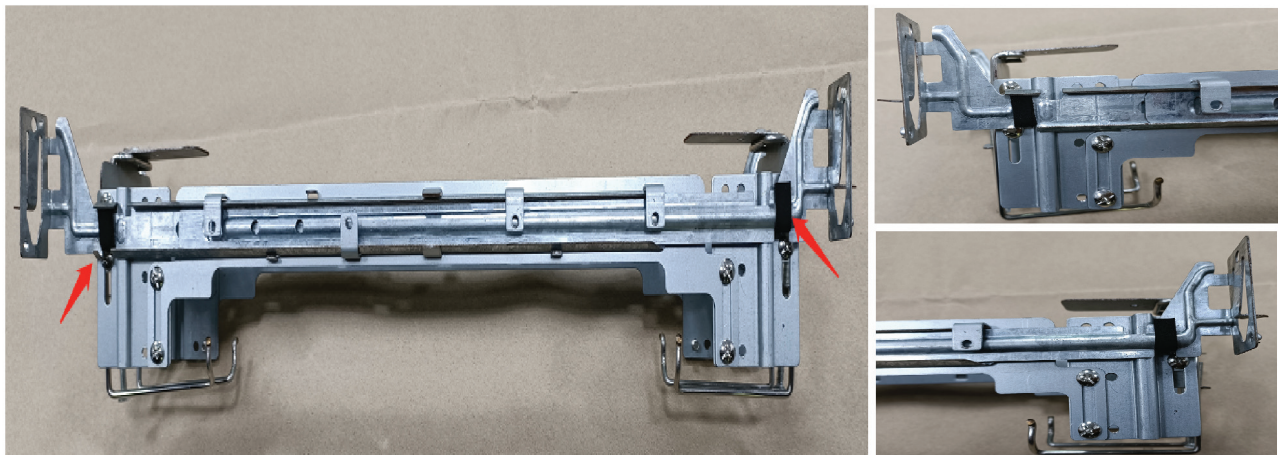
5. For SP unit, remove the front cover from the housing with a flat head screwdriver.
For AC only unit, go to step 8.
6. Remove the end cap that include the test button by unscrewing the three screws. Remove the LED indicator and test button from the end cap. Remove the test button and unplug it by using connectors. Screw the end cap in place with both the LED indicator and test button wirings passing the unit through the test button hole.



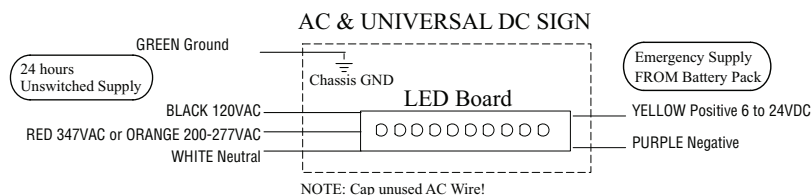
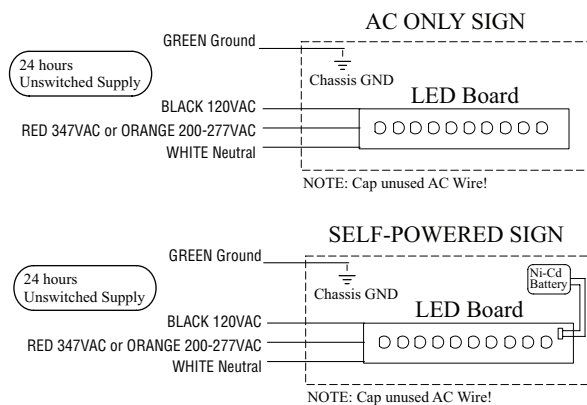
7. Reinstall the housing cover in the housing.
8. Feed AC supply wires through center hole of the housing into the J-box case, make proper wire connection in the J-box, then secure the cover to the case.



9. Push the fixture gently into recessed mounting frame until secured by the springs, secure grounding wire to recessed frame.
10. Install dry wall ceiling and cut 435mmx80mm rectangular opening in order to fit the installed recessed mounting frame.
11. Move the LED indicator and test switch down onto the trim plate and fix it. For AC only unit ,install white plugs to switch.hole and LED indicator hole(see picture above).Secure the trim plate by using provided screws until the trim plate touch the ceiling. Go to step 15.



12. For T-bar mounting, repeat step 1. Apply 4 black tapes onto 4 slots of hanging bars to adjust the mounting height of the whole unit.
13. Install mounting bars to the frame, then install the whole kit on T-bar grid, adjust the frame to the center between two grids. secure mounting bar to the frame by 2 screws on each side.
14. Repeat step 4 to 9 & 11
15. Apply power.



MAINTENANCE

1. The equipment is to be repaired whenever the equipment fails to operate as intended during the duration test. Written records of test results and any repairs made must be maintained. BeLuce Canada Inc. strongly recommends compliance with all Code requirements.
2. The lamps listed herein when used according to the instructions with this unit are in accordance with the requirements of CSA Standard C22.2, No. 141 – Unit Equipment for Emergency Lighting.
3. Clean sign face(s) on a regular basis.

NOTE: The servicing of any parts should be performed by qualified service personnel only. The use of replacement parts not furnished by BeLuce Canada Inc., may cause equipment failure and will void the warranty.

TROUBLESHOOTING

EXIT SIGN DOES NOT COME ON AT ALL

1. Check AC supply be sure unit has 24-hour AC supply (unswitched).
The AC supply must be at least 80% of nominal (96V on a 120V line) for equipment to function normally. At lower voltages the LED lamps will begin to glow dimly until the source voltage drops below the full “turn on” point.
NOTE: This condition may also be caused by incorrectly connecting an AC Volt supply line to the lead.
2. Check all AC connections.
3. If AC supply is OK; replace LED board assembly.

IF THE EMERGENCY LIGHTING FIXTURE IS EXPERIENCING ONE OF THE FOLLOWING PROBLEMS:

- The LED indicator is off or displaying the wrong status.
- The LED strip is on during AC power, but there is no emergency backup function.
- The LED strip is on, but the battery is not charging (battery voltage is low).

PERFORM A HARD RESET ON THE BATTERY AND CHARGER BOARD Steps to Perform a Hard Reset:

1. **Disconnect AC Power:** Turn off the AC power supply to the emergency lighting fixture.
2. **Unplug the Battery:** Safely disconnect the battery pack from the charger board.
3. **Wait for 10 Seconds:** Allow the system to completely discharge by waiting a minimum of 10 seconds.
4. **Reconnect Power:** Plug the battery pack back into the charger board.
5. **Restore the AC power** to the fixture.
6. **Verify the Reset:**
 - I. Check that the LED indicator is functioning correctly.
 - II. Ensure that the battery is charging and the emergency backup function is operational.

NOTE: If the issue persists after performing the hard reset, further inspection of the fixture or professional assistance may be required.

SAVE THESE INSTRUCTIONS