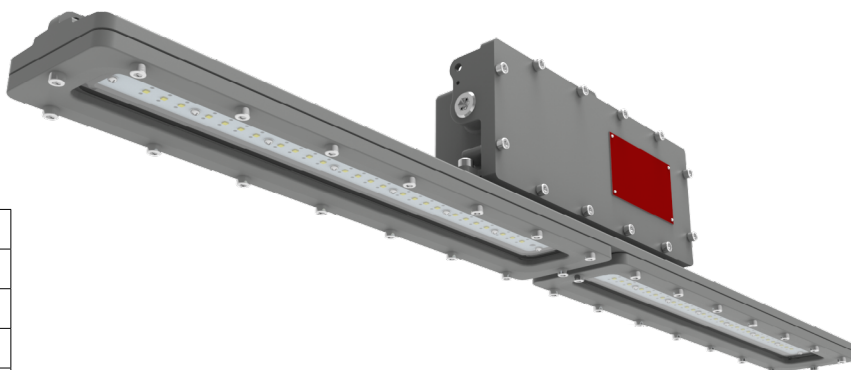


# CASTEX 1

## CAS-1

EACH MODEL NUMBER CONSISTS OF THE FOLLOWING:  
SERIES / LUMENS / WATTAGE / VOLTAGE / WET LOCATION /  
IMPACT RATING / WEIGHT / DIMENSION

<b>SERIES:</b>	CAS-1
<b>LUMENS:</b>	4 400LM - 10 400LM
<b>WATTAGE:</b>	40W/80W
<b>VOLTAGE:</b>	120-277 VAC OR 347V, 50/60HZ
<b>WET LOCATION:</b>	IP66
<b>VIBRATION RESISTANCE:</b>	5G
<b>IMPACT RATING:</b>	IK07
<b>WEIGHT:</b>	2': 16.1 LBS; 4': 23.8 LBS
<b>DIMENSION:</b>	2': 21.5" X 7.3" X 4.3" 4': 43.3" X 7.3" X 4.3"



## WARNING

No user serviceable parts. Refer service to a qualified service technician. Read instructions prior to installing and/or operating this device. Installation should be performed by a licensed electrician/installer in accordance with local codes.

## IMPORTANT SAFEGUARDS

To reduce the risk of death, personal injury or property damage from fire, electric shock, falling parts, cuts/abrasions and other hazards, please read all warnings and instructions included with and on the fixture box and all fixture labels. Before installing, servicing, or performing routine maintenance upon this equipment, please follow these general precautions:

1. Commercial installation, service and maintenance of luminaires should be performed by a qualified licensed electrician.
2. **DO NOT INSTALL DAMAGED PRODUCT!**
3. This fixture is intended to be connected to a properly installed and grounded UL listed junction box.
4. Make sure that the supply voltage is the same as the luminaire voltage.
5. Do not install where the marked operating temperatures exceed the ignition temperatures of the hazardous atmosphere.
6. Do not operate in ambient temperatures above those indicated on the luminaire nameplate.
7. All gasket seals must be clean and undamaged.

### WARNING: RISK OF ELECTRICAL SHOCK

1. Turn off electrical power at fuse or circuit breaker box before wiring fixture to the power supply.
2. Turn off the power when you perform any maintenance.
3. Verify that supply voltage is correct by comparing it with the luminaire label information.
4. Make all electrical and grounded connections in accordance with the National Electrical Code and any applicable local code requirements.
5. All wiring connections should be capped with UL approved wire connectors.
6. Luminaire must be supplied by a wiring system with an equipment grounding conductor.

### CAUTION: RISK OF INJURY

1. Wear gloves and safety glasses at all times when removing luminaire from carton, installing, servicing or performing maintenance.
2. Avoid direct eye exposure to the light source while it is on.
3. Account for small parts and destroy packing material, as these may be hazardous to children.

### CAUTION: RISK OF FIRE

1. Keep combustible and other materials that can burn away from luminaire and lamp/lens.
2. **MIN 90°C SUPPLY CONDUCTORS.**

### OPERATING CHARACTERISTIC

- Rated Voltage: 120-277 Vac or 347V, 50/60 Hz
- Ambient Temperature Range: -40°C (-40°F) ~ +60°C (140 °F)

926000233

This fixture is suitable for use in the following hazardous (classified) areas as defined by the National Electrical Code (NEC) and Canadian Electrical Code (CEC):

## Hazardous Locations

Class I, Division 1, Groups C, D  
Class I, Division 2, Groups A, B, C, D

## Compliances

UL 844  
UL 1598, UL 1598A  
CSA C22.2 No.137-M1981  
CSA C22.2 No.30-M1986  
CSA C22.2 No.250.0  
CSA C22.2 No.250.13

## Environmental Ratings

Suitable for wet location  
Refer to the luminaire nameplate for specific classification information, maximum ambient temperature suitability and corresponding operating temperature (T-Code).

## Servicing

- To avoid personal injury, disconnect power to the light and allow the unit to cool down before performing maintenance.
- Perform visual, electrical, and mechanical inspections on a regular basis. The environment and frequency of use should determine this. However, it is recommended that checks should be made at least once a year. Frequency of use and environment should determine this.
- The external glass should be cleaned periodically to ensure continued luminaire performance. Clean the glass with a clean, damp, non-abrasive, lint-free cloth. If this is not sufficient, use a mild soap or a liquid cleaner. Do not use an abrasive, strong alkaline or acid cleaner as damage may occur.
- Inspect the cooling fins on the luminaire to ensure that they are free of any contamination (i.e. excessive dust build-up). Clean with a non-abrasive cloth if needed.
- Mechanically check to make sure all parts are properly assembled.
- Electrically check to make sure that all connections are clean and tight.

## General Wiring Diagram

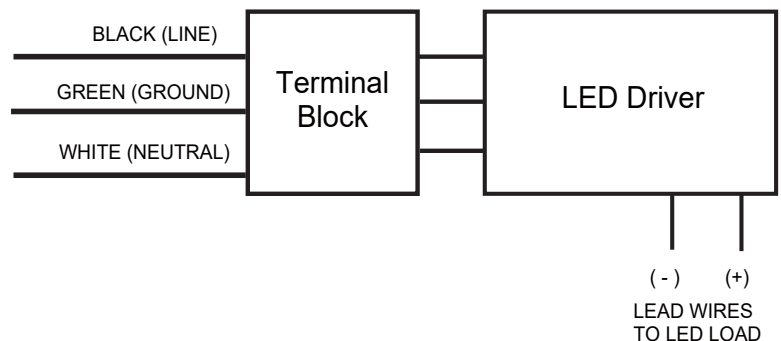
**CAUTION:** Turn off electrical power at fuse or circuit breaker box before wiring fixture to AC supply.

### CONNECTING LUMINAIRE PANELS TO AC SOURCE SUPPLY:

All units must be individually connected to the AC supply.

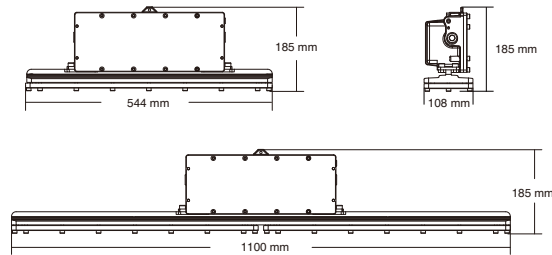
Black = Line  
White = Neutral  
Green = Ground

AC INPUT



## Dimensions

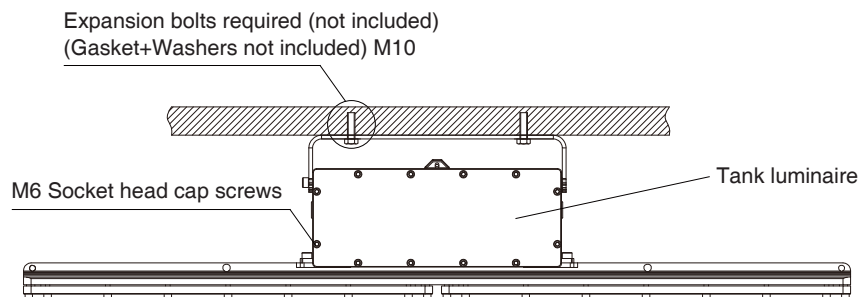
Part #	Net weight (lbs)	Dimensions (LxWxH)
CAS-1 (40W)	16.1	21.4 x 4.3 x 7.3 "
CAS-1 (80W)	23.8	43.3 x 4.3 x 7.3"



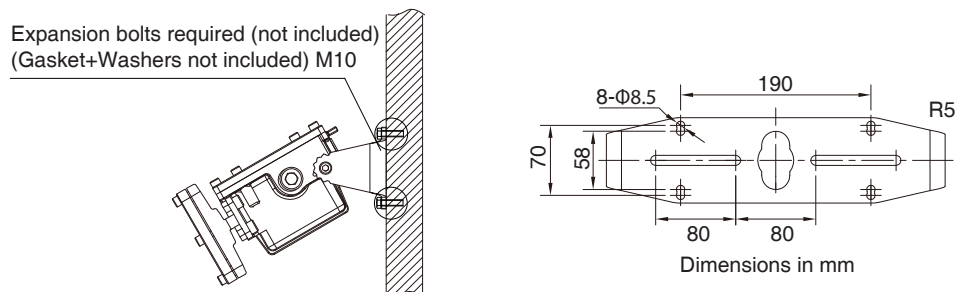
## Electrical Connection

1. Unscrew the twelve pcs of M6 hexagon bolts and remove the Tank Cover.
2. Install the Tank to the mounting bracket (Ceiling and Adjustable Surface mount) or suitable conduit (Pendant mount- the thread of entry hole of Tank is 3/4" NPT), or pole (Stanchion mount).
3. Insert wires from outside through the conduit and the entry hole of Tank, and then connect to terminal block.
4. Introduce the wires of branch circuit as following:  
Black-wire connects to Line  
White-wire connects to Neutral  
Green-wire connects to Ground
5. Re-attach the Tank Cover and tighten it by the twelve M6 hexagon bolts of Tank Cover with torque value 7 N-m.
6. Apply power.

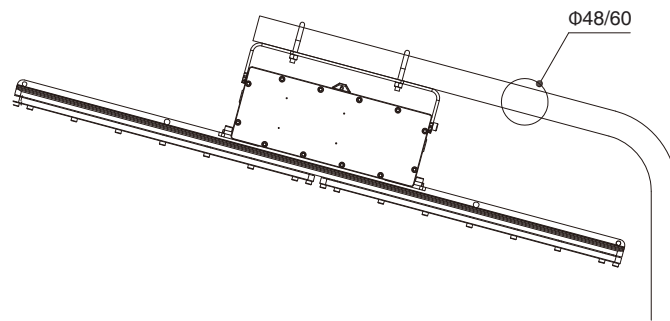
## Ceiling Mount



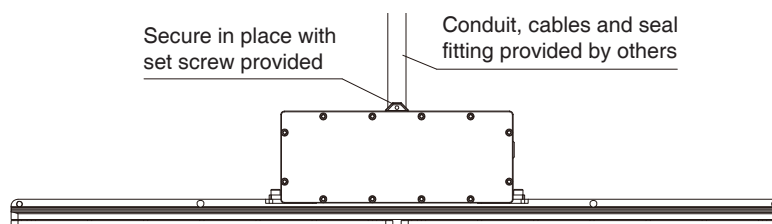
## Adjustable Surface Mount



## Stanchion Mount



## Pendant Mount



**SAVE THESE INSTRUCTIONS!**