

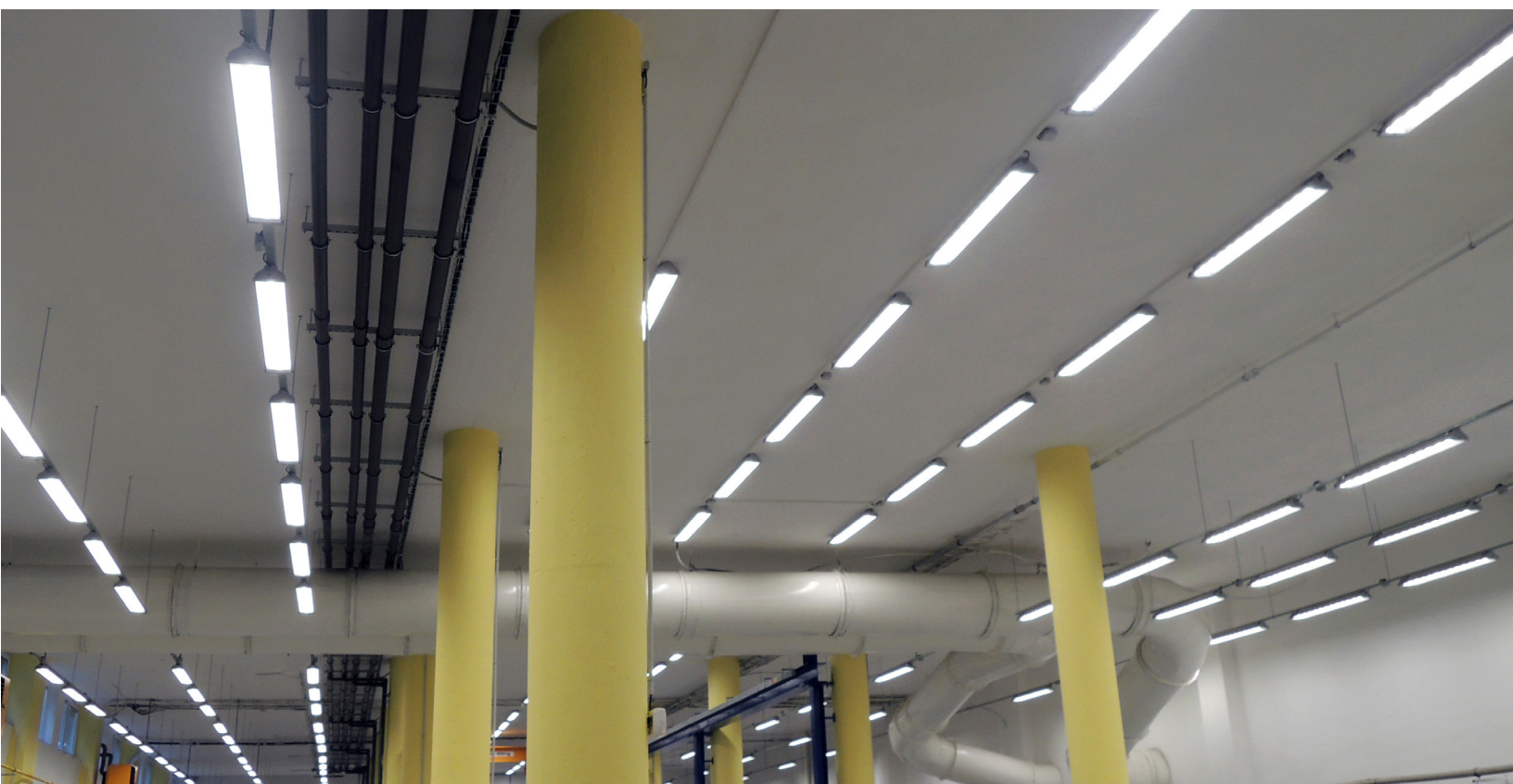
Acciaio® LED BX920



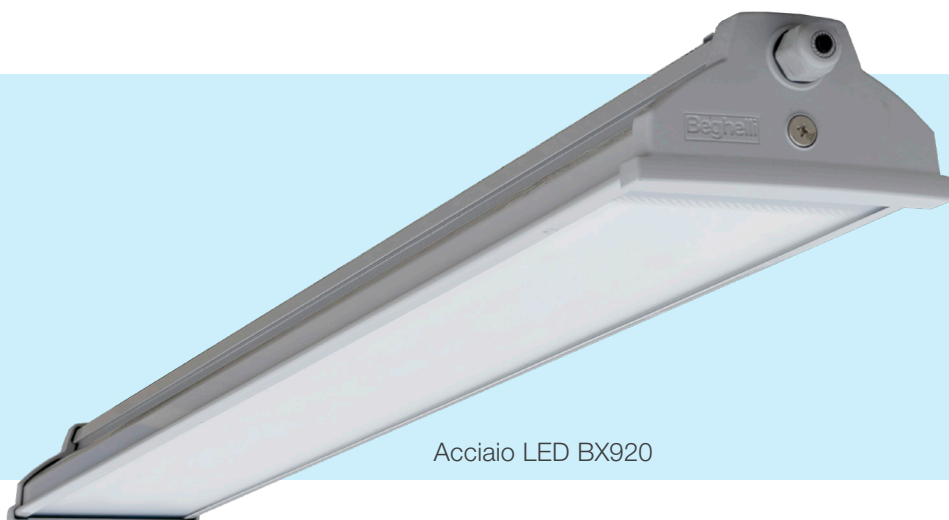
Acciaio® Eco LED

ACCIAIO® LED FAMILY

Steel LED Vapour-tight



BeLuce



Acciaio LED BX920

IK09 NEMA 4X IP66

Steel is the most recycled material in the world due to its recovery and reuse capabilities. The Accaio® LED family is constructed from steel and can therefore be recycled over time. Not only is steel environmentally friendly, it also offers durability and formability to the Accaio® LED.

The family of Acciaio® LED products offer high-output, long life LED technology for optimal performance and energy efficiency. Featuring a rugged and durable construction – the Acciaio® LED has a corrosion-resistant steel housing with a tempered glass lens, making it ideal for installation in tough conditions. The Acciaio® LED family of environmentally friendly luminaires deliver superior quality for excellent value.

The Acciaio® LED family is made from 24 ga. sheet steel with a protective grey powder coat finish and silicone gasket. It also incorporates an internal steel tray that holds all electrical components. The impact-resistant IK09 tempered glass diffuser will not yellow over time.

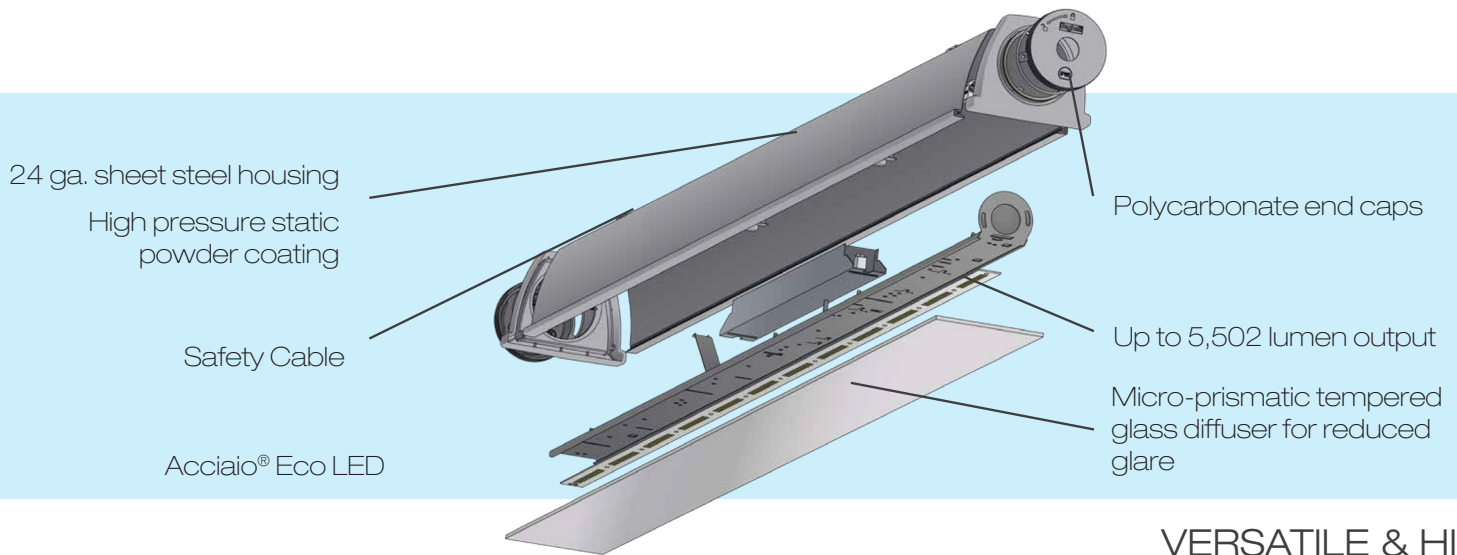


APPLICATIONS

The Acciaio® LED family is IP66, IK09, NEMA 4X and NSF rated for applications such as:

Car washes
Warehouses
Farms
Parking Decks

Breezeways
Canopies
Service corridors
Loading docks



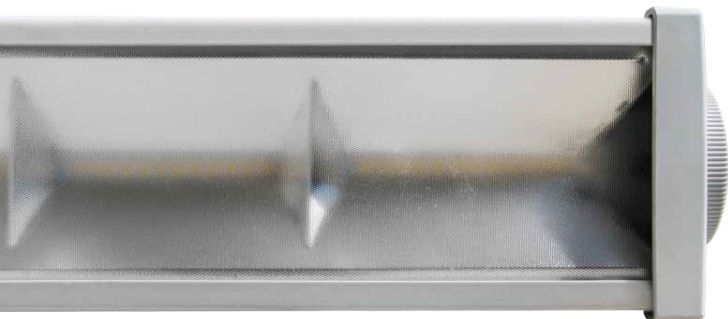
VERSATILE & HIGH PERFORMANCE LED

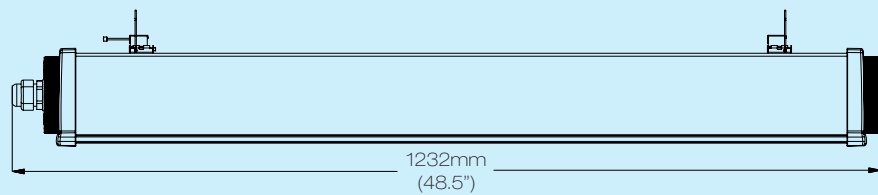
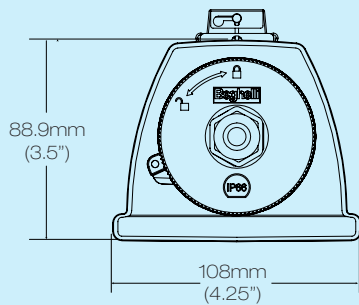
Acciaio® is Italian for steel, the element used in the overall construction; taking advantage of the durability and formability characteristics of steel. With the high percentage of reuse and recovery steel is the most recycled material in the world. The high-output, long life LED technology used in the Acciaio® Eco LED contains no toxic materials or heavy metals. Energy consumption is reduced up to 50% over traditional light sources with an efficacy of 125 lm/W as energy is converted into light and not wasted as heat.

The installation of the Acciaio® Eco LED takes approximately 50% less time than competitors' similar products. All Acciaio® products ship sealed with a water-tight connector installed and cabtire ready for connection. Installers are not required to open the Acciaio® housing to complete their installation. This results in quicker and more accurate installations saving both time and money. Value is provided through brand name components and a 5 year maintenance-free warranty.

The structural simplicity of the Acciaio® Eco LED, combined with its high-strength materials and the ingress and impact resistance of IP66 and IK09, make it a product suitable to be installed in particularly tough conditions. Performance is delivered through the crystal micro-prismatic diffuser specially designed to ensure maximum output with minimal glare. As a result of the 6' cabtire and water tight strain relief brushing, installation is incredibly fast. The innovative design with screw cap allows for easy maintenance.

Acciaio® Eco LED answers the demand for products with high performance for industrial applications. The steel body and IK09 rated tempered glass lens are superbly impact resistant. The optical system is composed of a reflector divided into 12 cells for optimal light distribution, and a special micropismatic glass with extremely high light transmittance for superior visual comfort. Acciaio® Eco LED is suitable for use in harsh outdoor environments directly exposed to the weather. It is designed to withstand vibration and mechanical disturbances typical of industrial environments.





IK09 | IP66

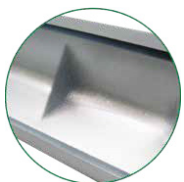


MODEL	LENGTH	OPERATION	POWER	COLOUR TEMP	INPUT	OPTIONS
BX910LED	4 (4FT)	HT (AC ONLY)	LO (3727lm)	WT 35* (3500K)	120-277V	TM (tilting brackets)
		SA ¹ (Emergency)	HO (5648lm)	WT40 (4000k)	347V	AC ² (aviation cable)
				WT50 (5000K)		PM (pivot mount)

NOTE*: longer lead time may apply; NOTE1: SA is not available in 347V; NOTE2: specify length for AC: 50", 72", 150", 250" fully adjustable.



Internal tray
holds all electrical
components



3mm tempered
glass diffuser impact
rating of IK09



Gasketed
polycarbonate end
caps ensure IP66
rating

WATTAGE	30 & 50W
VOLTAGE	120-277V, 347V, 50/60 Hz
LUMENS	3500 & 5500
EFFICACY	125 lm/W
CRI	>80
CCT	3500K, 4000K, 5000K
LEVEL OF PROTECTION	IP66 IK09
DIMMING	0-10V standard
AMBIENT TEMPERATURE	-40°C TO +40°C
INSTALLATION	Surface, tilting, suspension
HOUSING	Sheet steel powder coat Polyester, RAL 7035
END CAPS	Polymer PC + PBT
OPTICS	Parabolic polished aluminum
DIFFUSER	Micro-prismatic High transmission tempered glass
LUMEN LIFESPAN	>100,000 hours @ L ₇₀

FEATURES AND BENEFITS

ACCIAIO® LED BX920

SUSTAINABLE DESIGN

- The Acciaio® is constructed with green initiatives in mind and is completely recyclable.

EASE OF INSTALLATION

- Uniquely designed terminal compartment allows for easy access to wiring
- Installation time is approximately 50% less than comparable products
- No assembly required. These fixtures come with a 6' whip

HIGH PERFORMANCE OPTICS

- Acciaio® BX920 delivers up to 9,329 lumens

SANITATION LISTED

- Equivalent to the NSF/ANSI standard 2
- Suitable for usage in environments involving food equipment

EMERGENCY BACKUP (SA)

- Optional emergency backup with Ni-Cd batteries for 90 mins

ACCIAIO® ECO LED

IN STOCK AND READY TO SHIP.
INCLUDES A 72" LINE CORD

- Installation time is approximately 50% less than comparable products
- Reduced labor time = money saved

SANITATION LISTED

- Equivalent to the NSF/ANSI standard 2
- Suitable for usage in environments involving food equipment

HIGH PERFORMANCE OPTICS

- Micro-prismatic light distribution provides glare control and better performance
- Reduce the number of fixtures to be maintained in an area

24ga ROLLED STEEL, HIGH PRESSURE
STATIC POWDER COATING

- The Acciaio® is constructed with green initiatives in mind and is completely recyclable.

TEMPERED GLASS LENS

- Has an IK09 (impact resistant) rating
- Will not turn yellow over time, even in higher temperatures

IP66 PROTECTION

- For installation in wet location and dust filled environments
- Suitable for wash down areas with high psi

SINGLE ENTRY POINT

- Maintains the integrity of the luminaire
- Eliminates errors in installation and maintenance

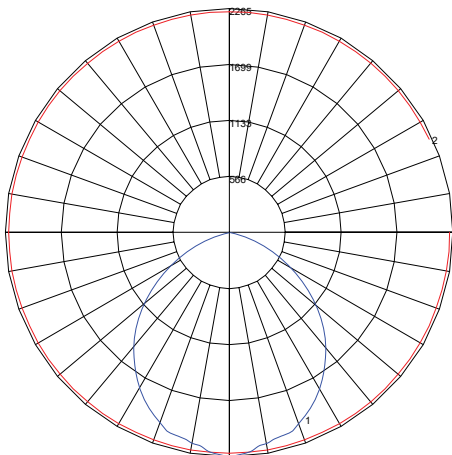
ENERGY COMPARISON

Acciaio® Eco BX910 LED

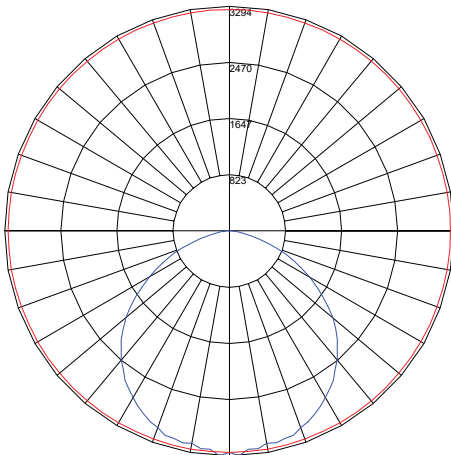
EFFICACY	WATTAGE	LUMENS	CRI	L80 HOURS
Up to 125 lm/W	30W & 50W	3,543 – 5,502	+80	>60,000

Acciaio® BX920 LED

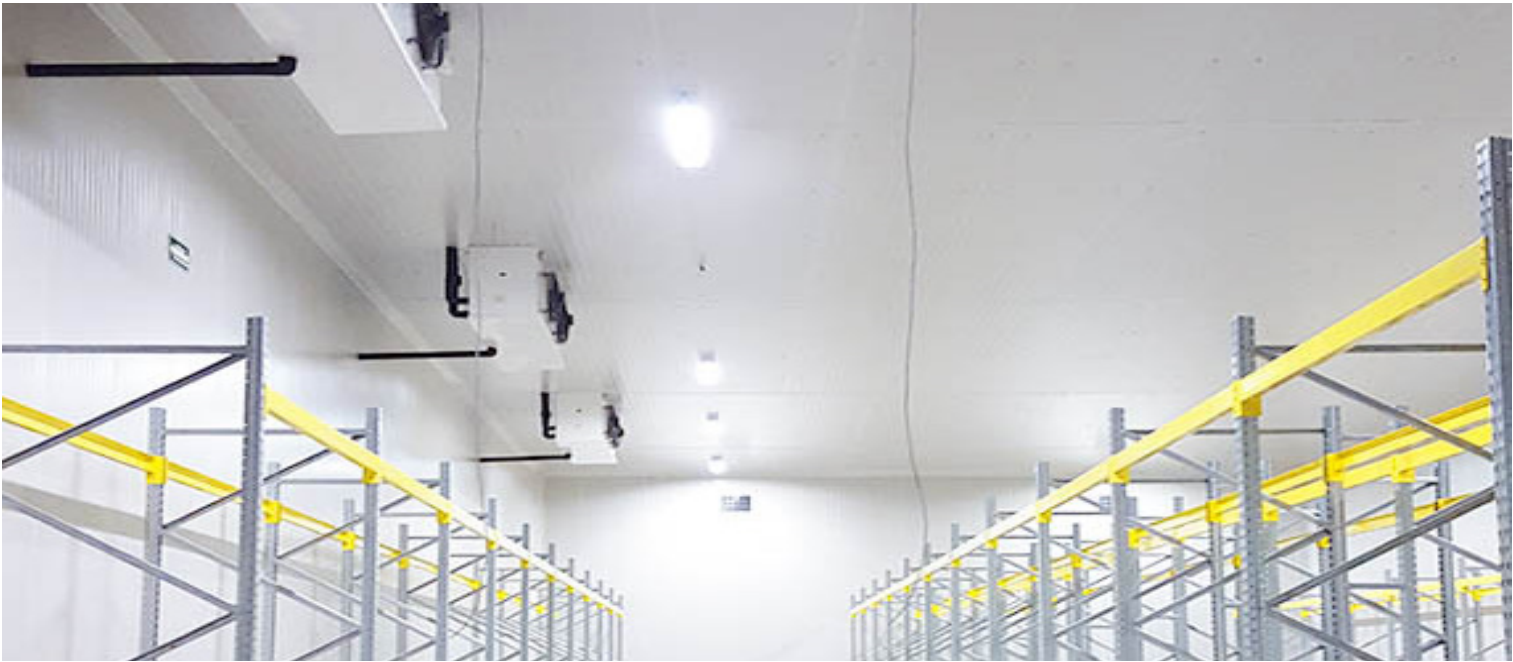
EFFICACY	WATTAGE	LUMENS	CRI	L80 HOURS
Up to 117 lm/W	50W & 80W	5,506 – 9,329	+80	>60,000



BX910LED-4HT-HO-WT40-120-277V

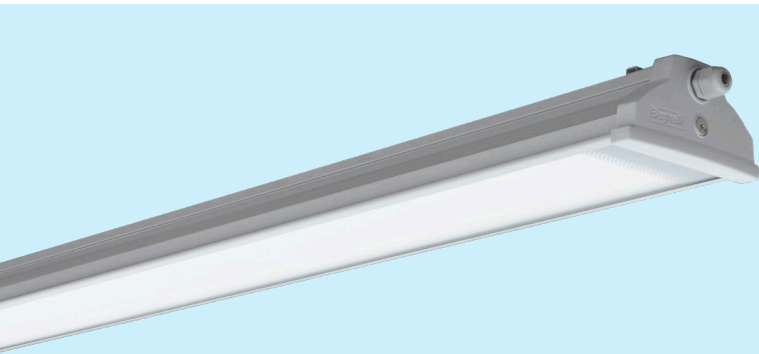


BX920LED-4HT-HO-WT40-120-277V

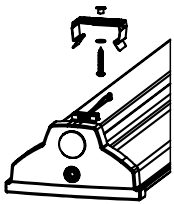
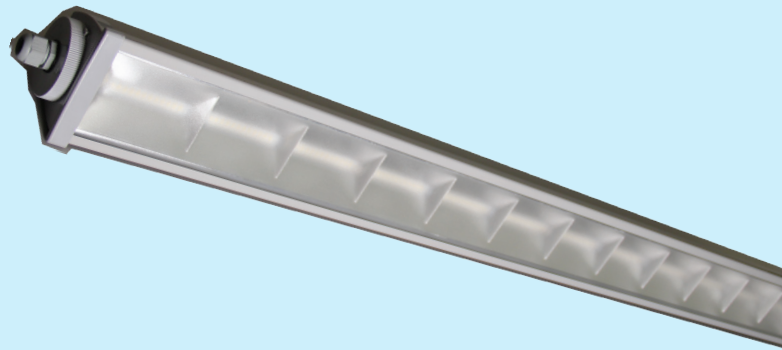


MOUNTING OPTIONS

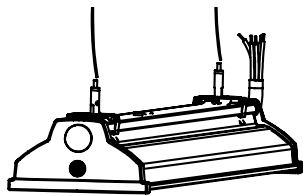
ACCIAIO® LED BX920



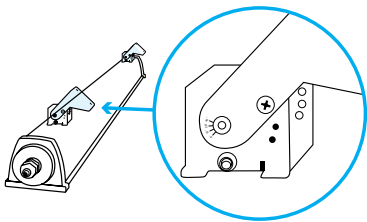
ACCIAIO® ECO LED



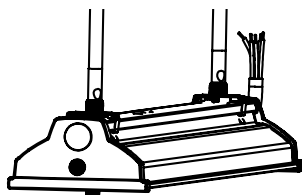
SURFACE



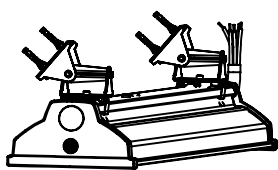
AIRCRAFT CABLE



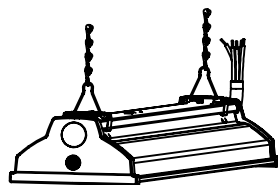
TILTING



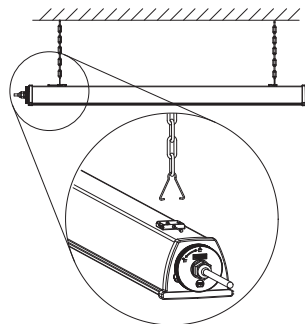
PENDANT



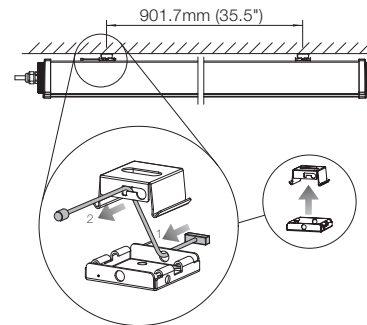
PIVOT



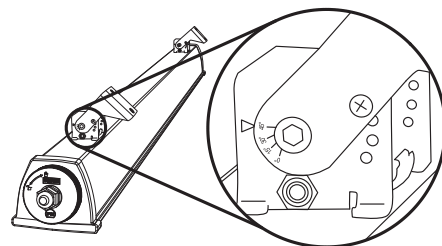
CHAIN



SUSPENSION



SURFACE



TILTING



ACCIAIO® LED FAMILY

BeLuce Canada Inc.
3900 14th Avenue, Unit 1
Markham, ON L3R 4R3

Phone: (905) 948 9500
TF: (877) 358-9638
Fax: (905) 948-8673

www.beghellicanada.com