



CENTRO

SMART EMERGENCY LIGHTING CENTRALLY CONTROLLED

Project Name: _____ Model Number: _____
 Prepared By: _____ Date: _____

FEATURES AND SPECIFICATIONS

CIRCUITRY

- 120/277/347VAC input, field selectable
- 24VDC output
- 144W maximum evenly split across 6 inputs (channels) not exceeding 54W per input (channel) and 120 devices
- 2 DC terminal blocks per input (channel)
- Wattage capacity of 144W maximum for 30 and 60 min emergency power duration standard
- Extra battery pack can be added for more duration
- Fully automatic, current limited charger
- High performance battery
- Programmable auto-test
- Ethernet port
- TFT display
- 4 operations buttons
- CSA C22.2 #141-15 certified by Intertek (ETL)

MECHANICAL

- Steel construction
- Black powder coat finish comes standard
- 3 keyholes for wall mount
- 19 knockouts of 20mm for easy wiring
- Conduit entry knockouts

COMPATIBLE DEVICE

- Signs: Stella RM, Quadra RM, Forma RM, Forte RM, Aqua RM, Soldato RM
- Remote: SR, Soldato Remote, BTMR, RMR, RMR-REM

MODEL RATING¹

MODEL	60 MIN	120 MIN	180 MIN	720MIN
CN-6-24V-144WLED-120277347V	144W	96W	60W	24W
² CN-BAT-6-24V-180W-120277347V	180W	180W	180W	72W

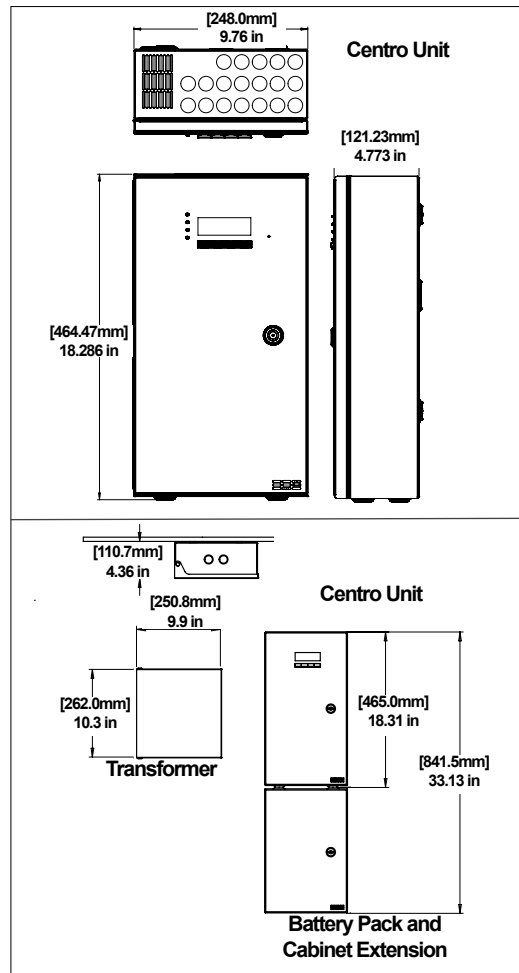
NOTES: ¹Consult your representative for more details; ² Power supply limited to 180W

ORDERING CODE

ORDERING CODE	SHORT DESCRIPTION	LONG DESCRIPTION
19002000	CENTRO UNIT 6 CHAN 24V 144W 120277347V	CENTRO BATTERY UNIT 6 CHANNEL 24V 144W LED SMART EMERGENCY 120277347V
50001300	CENTRO BATTERY PACK & CABINET EXTENSION	CENTRO BATTERY PACK & CABINET EXTENSION

Centro is an all-in-one solution that handles Normally ON, Normally OFF, and communication using a single pair of wires. Connected via Ethernet, it can be controlled through the Centro Software or web interface anywhere in the world. This allows you to manage up to 120 emergency units (signs/remotes) within a single building or oversee several buildings remotely from one central access point.

DIMENSIONS





CENTRO

SMART EMERGENCY LIGHTING CENTRALLY CONTROLLED

Reliability is the most important feature of any emergency power source. Without it, all other features and benefits are meaningless. Fortunately, there is now an innovative and reliable solution that greatly simplifies the installation process and considerably reduces the cost of material, labour, monitoring and maintenance: the **Centro** system. Normally on signs and normally off remotes must operate independently on the building's power during a power failure. It thus requires two different cables to connect the emergency fixtures. A third wire is essential to allow communication between the units. It, therefore, generates important material and labour costs, especially for large/vast buildings where running thousands of feet of wires are needed. The **Centro** system is the perfect solution to reduce those costs because it only involves a single cable instead of three. The **Centro** drivers within each unit will determine what is normally off or normally on in the circuit. It also permits communication between the units and the **Centro** Software.

CENTRO LAYOUT

The **Centro** system is a compact centralized battery with 144W capacity for 1 hour. An extra battery pack can be added to increase duration if needed. It can be split across 6 channels and be related to a maximum of 120 devices. There are 11 compatible BeLuce products with the **Centro** system: 6 signs and 5 remotes. Since it's a centralized battery, only one point of maintenance and service is required, being again a cost-effective solution.

MONITORING & MAINTENANCE

The auto-test feature allows testing of your emergency system to the Fire code of Canada's requirements. All tests and changes to the system are logged. Reports are automatically sent via email for effective maintenance. If a lamp is no longer turning on, receive a fast update by email. For example, if there is a load variation in the system, the **Centro** software will create a report accessible on the web platform and send error messages by email to the main user. Since it is possible to identify the units by a unique name, the main user will easily know where the defective fixture is located in the building so it can be replaced.



KEY FEATURES

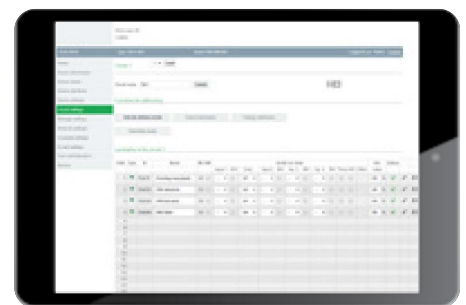
- All-in-one solution handling Normally ON, Normally OFF, and communication with the same pair of wires
- Monitors the emergency lighting system by automatically performing the tests required by the National Building Code, reducing maintenance time and costs.
- **Centro** connects to the internet via Ethernet cable and can be controlled through the Centro Software or web from anywhere in the world
- All **Centro** systems installed in multiple buildings can be controlled, operated and monitored remotely in the same group using the Centro Web platform.
- Maintenance report is created and available on the **Centro** software or web platform
- Error notifications and important information are sent to the predefined user.
- **Centro** is a centralized battery, meaning only one point of maintenance is needed.

CUSTOMIZATION

The **Centro** system is equipped with an automatic search and light coding function. It means the main user can identify every unit in a building with a unique name or code, so it is easier to maintain afterwards and avoid laborious coding errors.

NETWORKING

Due to the **Centro**'s functionality, all systems in its group can be centrally controlled, operated and serviced. Ultimately, the full potential of the **Centro** system unfolds with its visualization software. **Centro** connects to the Internet via an Ethernet cable and can be controlled through the Centro software or web from anywhere in the world. All the emergency lighting systems in multiple buildings can thus be visualized in the same network by a single person and from any location with an Internet connection. Information about the status of the systems is sent by e-mail to the main user.



Control the Centro Web platform through the software or web from anywhere in the world

CENTRO

SMART EMERGENCY LIGHTING CENTRALLY CONTROLLED

COMPATIBLE DEVICES: SIGNS & REMOTES



STELLA RM - CENTRO



QUADRA RM - CENTRO



FORMA RM - CENTRO



FORTE RM - CENTRO



SOLDATO RM - CENTRO



AQUA RM - CENTRO



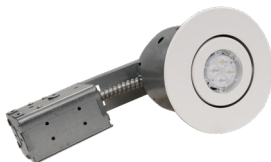
SOLDATO REMOTE - CENTRO



SR - CENTRO



BTMR - CENTRO



RMR-REM - CENTRO



RMR - CENTRO

CENTRO

SMART EMERGENCY LIGHTING CENTRALLY CONTROLLED

STELLA RM - CENTRO

SL-RM-ST - - - - -

SERIES	OPERATION	LIGHT SOURCE	FACE #	PICTOGRAM	MOUNTING	OPTIONS
SL-RM-ST	CN (Centro Driver)	Blank (LED)	1 (Single) 2 (Double) U (Universal)	OLR (Universal pictograms) *0 (No indicator) D (Down indicator) U (Up indicator) UR (45° up right) DR (45° down right) UL (45° up left) DL (45° down left)	M (Universal mount wall, ceiling/ end mount)	TP (Tamper proof screws) KO (1/2" Knockout for pendant mount) BLK (Black housing) GRY (Grey housing) SW (Special wording) 'BO (Black Out Option - Special wording) 'WO (White out Option - Special wording) LXN (Lexan guard - Separate accessory order) WG (Wire guard - Separate accessory order) LB (Low Brightness)

Note*:No Indicator is used for double face only; Note!: Available only with SW option.

QUADRA RM - CENTRO

QR-RM-ST - - - - -

SERIES	OPERATION	LIGHT SOURCE	FACE #	PICTOGRAM	MOUNTING	OPTIONS
QR-RM-ST	CN (Centro Driver)	L (LED)	1 (Single) 2 (Double) U (Universal)	OLR (Universal pictograms) *0 (No indicator) D (Down indicator) U (Up indicator) UR (45° up right) DR (45° down right) UL (45° up left) DL (45° down left)	M (Universal mount wall, ceiling/ end mount)	TP (Tamper proof screws) KO (1/2" Knockout for pendant mount) BLK (Black housing) GRY (Grey housing) BA (Brushed aluminum finish) SW (Special wording) 'BO (Black Out Option - Special wording) 'WO (White out Option - Special wording) LXN (Lexan guard - Separate accessory order) WG (Wire guard - Separate accessory order) VS (Vandal resistant shield) LB (Low Brightness)

Note*:No Indicator is used for double face only; Note!: Available only with SW option.

FORMA RM - CENTRO

FM-RM-ST - - - - -

SERIES	OPERATION	LIGHT SOURCE	FACE #	PICTOGRAM	MOUNTING	OPTIONS
FM-RM-ST	CN (Centro Driver)	L (LED)	1 (Single) 2 (Double) U (Universal)	OLR (Universal pictograms) *0 (No indicator) D (Down indicator) U (Up indicator) UR (45° up right) DR (45° down right) UL (45° up left) DL (45° down left)	M (Universal mount wall, ceiling/ end mount)	KO (1/2" Knockout for pendant mount) LXN (Lexan guard - Separate accessory order) WG (Wire guard - Separate accessory order) BLK (Black housing) BA (Brushed aluminum finish)

Note*:No Indicator is used for double face only.

CENTRO

SMART EMERGENCY LIGHTING CENTRALLY CONTROLLED

FORTE RM - CENTRO

FR-RM-ST - - - - -

SERIES	OPERATION	LIGHT SOURCE	FACE #	PICTOGRAM	MOUNTING	OPTIONS
FR-RM-ST	CN (Centro Driver)	L (LED)	1 (Single) 2 (Double)	OLR (Universal pictograms) *0 (No indicator) D (Down indicator) U (Up indicator) UR (45° up right) DR (45° down right) UL (45° up left) DL (45° down left)	W (Wall mount no canopy) C (Ceiling mount factory installed) E (End mount factory installed)	SW (Special wording) 'BO (Black Out Option - Special wording) 'WO (White out Option - Special wording) WG (Wire guard - Separate accessory order) HFC (Heavy-duty full width ceiling mount canopy)

Note*:No Indicator is used for double face only; Note¹: Available only with SW option.

AQUA RM - CENTRO

AQ-RM-ST - - - - -

SERIES	OPERATION	LIGHT SOURCE	FACE #	PICTOGRAM	MOUNTING	OPTIONS
AQ-RM-ST	CN (Centro Driver)	L (LED)	1 (Single) 2 (Double)	OLR (Universal pictograms) *0 (No indicator) D (Down indicator) U (Up indicator) UR (45° up right) DR (45° down right) UL (45° up left) DL (45° down left)	W (Wall mount no canopy) C (Ceiling mount factory installed) E (End mount factory installed) PM (Pendant mount)	SW (Special wording) 'BO (Black Out Option - special wording) 'WO (White out Option - Special wording) WG (Wire guard - separate accessory order)

Note*:No Indicator is used for double face only ; Note¹: Available only with SW option.

SOLDATO RM - CENTRO

SOL-RM-ST- - - - -

SERIES	OPERATION	FACE #	PICTOGRAM	MOUNTING	OPTIONS
SOL-RM-ST	CN (Centro Driver)	1 (Single) 2 (Double)	OLR (Universal pictograms) *0 (No indicator) D (Down indicator) U (Up indicator) UR (45° up right) DR (45° down right) UL (45° up left) DL (45° down left)	M (Universal mount ceiling or end mount)	BLK (Black - Standard) WH (White)

Note*:No Indicator is used for double face only.

CENTRO

SMART EMERGENCY LIGHTING CENTRALLY CONTROLLED

SR- CENTRO

SR-ST - - -

SERIES	HEAD	VOLTAGE AND WATTAGE	OPTIONS
SR-ST	1 (Single head) 2 (Double head)	¹ CN24V2.5W (Centro Driver 24V2.5W) CN24V5W (Centro Driver 24V5W)	BLK (Black) LC (Less canopy) TP (Tamper proof screws) WG (Wire guard - order separately)

Note¹: Double heads only

BTMR- CENTRO

BTMR-ST - - -

SERIES	HEAD	VOLTAGE AND WATTAGE	OPTIONS
BTMR-ST	1 (Single head) 2 (Double head)	¹ CN24V2.5W (Centro Driver 24V2.5W) CN24V5W (Centro Driver 24V5W)	BLK (Black) LC (Less canopy) TP (Tamper proof screws) WG (Wire guard - order separately) LNX (Lexan guard - order separately)

Note¹: Double heads only

RMR-REM - CENTRO

RMR-REM-ST - - -

SERIES	HEAD	VOLTAGE AND WATTAGE	OPTIONS
RMR-REM-ST	1 (Single head)	CN24V5W (Centro Driver 24V5W)	WHT (White - Standard) BLK (Black) CH (Chrome) CC (Custom Colour - must specify) ¹ SQ (Square trim)

Note¹: For Black square trim contact manufacture for availability

RMR- CENTRO

RMR-ST - - -

SERIES	HEAD	VOLTAGE AND WATTAGE	OPTIONS
RMR-ST	1 (Single head)	CN24V5W (Centro Driver 24V5W)	WHT (White - Standard) BLK (Black) CH (Chrome) CC (Custom Colour - must specify) ¹ SQ (Square trim)

Note¹: For Black square trim contact manufacture for availability

SOLDATO REMOTE - CENTRO

SOL-RMT-ST - - -

SERIES	CAPACITY	LAMP#	LAMP TYPE	OPTIONS
SOL-RMT-ST	CN (Centro Driver)	1 (Single lamp) 2 (Double lamp)	¹ 2.5W 5W	BLK (Black) WH (White)

Note¹: Double heads only